

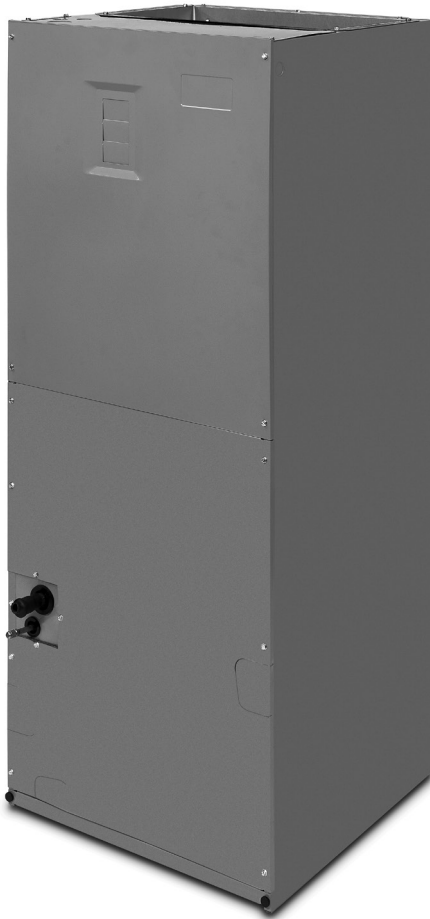
TECHNICAL SPECIFICATIONS

B65VMMX Series

Air Handlers with TXV and variable speed blowers for SEER2 Residential System

1.5 - 5 tons (Heat Pump & Air Conditioner)

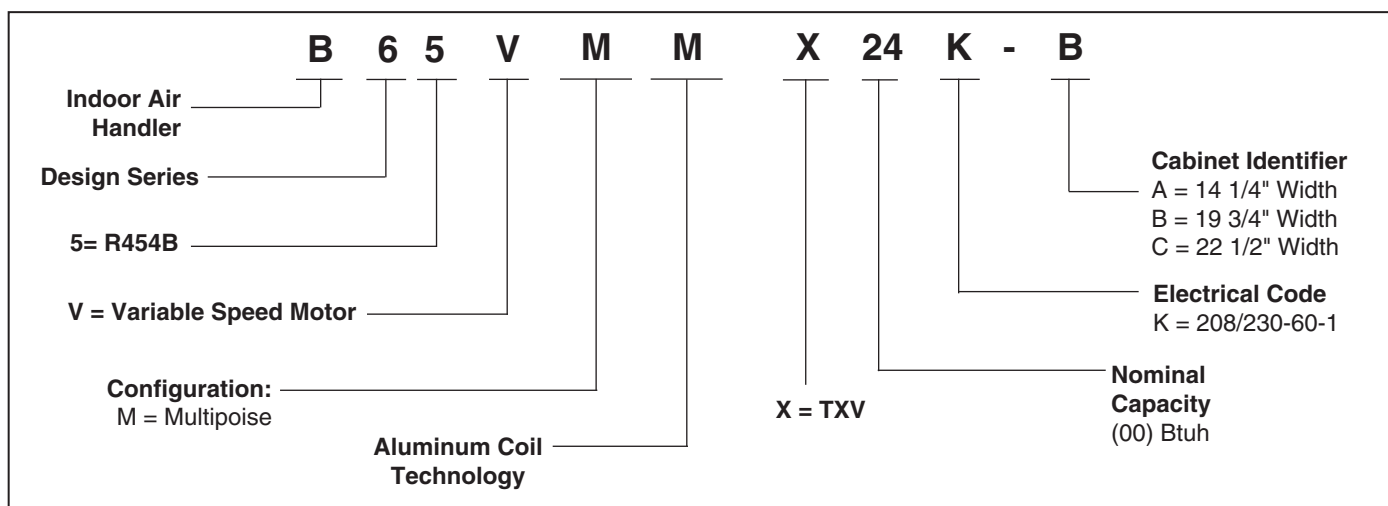
The B65VMMX Series of air handlers, when combined with our heat pump or air conditioner, offers a full line of quality, split system heating and cooling equipment.



FEATURES and BENEFITS

- **Energy Efficient Variable Speed ECM Motor:** Advanced technology provides 16 field-selectable cooling airflows and automatically sets heating airflows based on the amount of installed heat.
- **Quiet Blower Operation:** Extra quiet and smooth blower on and off cycles.
- **Constant airflow:** Motor automatically adjusts to different static loads.
- **Reduced air stratification:** This results in improved air quality by optimizing humidity removal and filtration capabilities.
- **Multi-poised:** Can be used in horizontal, upflow, downflow and vertical applications.
- **Built in Filter Rack:** makes the air handler easy to service.
- **Plug-in Heater Kit:** Available in 5 kw through 24 kw.
- **Circuit Board:** Incorporating blower time delay relay, low voltage terminal strip, and heat-strip sequencing.
- **Breaker Accessibility:** Breaker accessible from the front of the unit when heater is applied.
- **Plastic Drain Pan:** Provides corrosion resistance.
- **Durable Cabinet:** Galvanized steel with a polyurethane finish. The finish will endure 950 hours of salt spray and resist corrosion 50% better than comparable units.
- **Designed to meet the requirements 610.2.A.2:** Meets Florida building code requirements for air leakage.
- **Thermal Expansion Valve:** Factory installed externally equalized thermal expansion valve provides precise refrigerant control under varying load conditions.
- **Cabinet Insulation:** 1" insulation with an R-value of 4.2 contributes to quiet operation and prevents cabinet sweating in difficult applications.
- **Aluminum Coil Technology:** All aluminum coil provides high corrosion resistance.

MODEL IDENTIFICATION CODE



SPECIFICATIONS

Model B65VMMX	24K-B	3648K-C	60K-C
Refrigerant Flow Control	TXV	TXV	TXV
Maximum Available Nominal Auxiliary Heat (kw)	15	25	25
Motor HP	1/2	3/4	1
Approximate Shipping Weight (lbs.)	121	145	147

ACCESSORIES

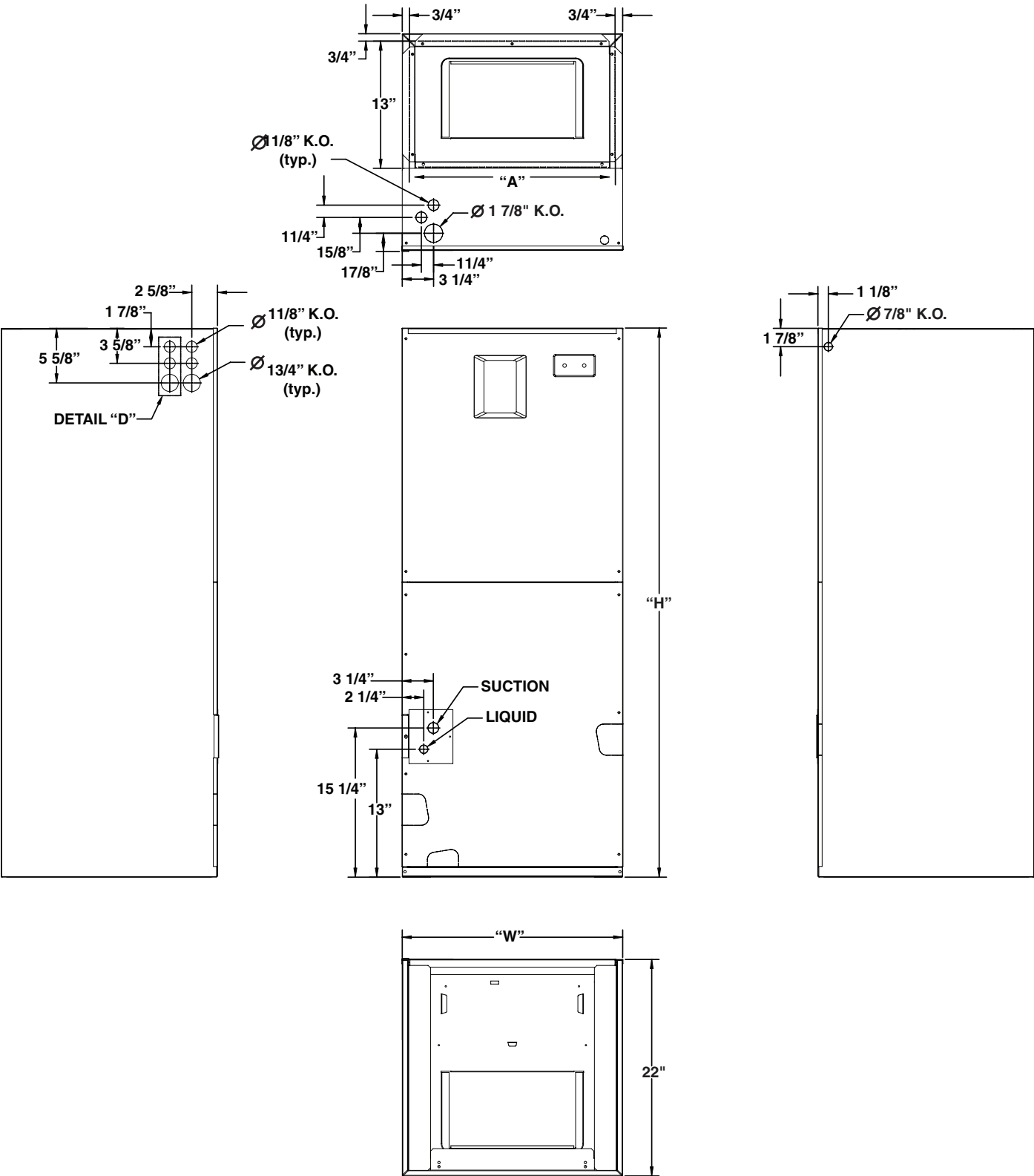
Accessory Kit Description	Cabinet Size		Order Number
	B	C	
Down-flow adaptor kit	X		919321
		X	919322
Single circuit adaptor for 2 circuit breakers	X	X	913874
Baffle Drip Guard 3"	X		922125
Baffle Drip Guard 4"		X	922126

230V Single-Phase Heater Kit Application

Nominal KW				Order Number	
	*24K-B	*36/48K-B	*60K-C	With Circuit Breakers	Without Circuit Breakers
5	X	X	X	922521D	922520D
8	X	X	X	922523D	922522D
10	X	X	X	922526D	922525D
15	X	X	X	922527D	n/a
20	n/a	n/a	X	922529D	n/a
25	n/a	n/a	X	922530D	n/a

DIMENSIONS

Models B64VMMX	Height	Width	Refrigerant Connections		Filter Size	Supply Air Duct Dimensions
			Suction Dia.	Liquid Dia.		
24K-B	49 1/2	19 3/4	7/8	3/8	18 x 20 x 1	12 7/8 x 18 1/4
3648K-C	56	22 1/2	7/8	3/8	20 x 20 x 1	12 7/8 x 21
60K-C	56	22 1/2	7/8	3/8	20 x 20 x 1	12 7/8 x 21



ELECTRICAL DATA

Cabinet	Tons	Model Number H8HK-	Voltage 208								Voltage 230							
			Minimum Circuit Ampacity (MCA)				Max Over-current Protection (MOP)				Minimum Circuit Ampacity (MCA)				Max Over-current Protection (MOP)			
			Circuit A	Circuit B	Circuit C	Single Circuit	Circuit A	Circuit B	Circuit C	Single Circuit	Circuit A	Circuit B	Circuit C	Single Circuit	Circuit A	Circuit B	Circuit C	Single Circuit
B	24	None	4.8	-	-	4.8	15	-	-	15	4.8	-	-	4.8	15	-	-	15
		005K-XX	26.4	-	-	26.4	30	-	-	30	28.7	-	-	28.7	30	-	-	30
		008K-XX	39	-	-	39	40	-	-	40	42.7	-	-	42.7	45	-	-	45
		010K-XX	48	-	-	48	50	-	-	50	52.7	-	-	52.7	60	-	-	60
		015L-XX	43.3	26.4	-	69.7	45	30	-	70	47.9	28.7	-	76.6	50	30	-	80
C	3648	None	6.8	-	-	6.8	15	-	-	15	6.8	-	-	6.8	15	-	-	15
		005K-XX	28.4	-	-	28.4	30	-	-	30	30.7	-	-	30.7	35	-	-	35
		008K-XX	41	-	-	41	45	-	-	45	44.7	-	-	44.7	45	-	-	45
		010K-XX	50	-	-	50	50	-	-	50	54.7	-	-	54.7	60	-	-	60
		015L-XX	43.3	28.4	-	71.7	45	30	-	80	47.9	30.7	-	78.6	50	35	-	80
		020K-XX	43.3	50	-	93.3	45	50	-	100	47.9	54.7	-	102.6	50	60	-	110
		024K-XX	43.3	43.3	28.4	114.9	45	45	30	125	47.9	47.9	30.7	126.5	50	50	35	150
C	60	None	8.8	-	-	8.8	15	-	-	15	8.8	-	-	8.8	15	-	-	15
		005K-XX	30.4	-	-	30.4	35	-	-	35	32.7	-	-	32.7	35	-	-	35
		008K-XX	43	-	-	43	45	-	-	45	46.7	-	-	46.7	50	-	-	50
		010K-XX	52	-	-	52	60	-	-	60	56.7	-	-	56.7	60	-	-	60
		015L-XX	43.3	30.4	-	73.7	45	35	-	80	47.9	32.7	-	80.6	50	35	-	90
		020K-XX	43.3	52	-	95.3	45	60	-	100	47.9	56.7	-	104.6	50	60	-	110
		024K-XX	43.3	43.3	30.4	116.9	45	45	35	125	47.9	47.9	32.7	128.5	50	50	35	150

AIRFLOW DATA

COOLING AIRFLOW - B CABINET						
CMF	A/B SWITCH SETTING 0 = OFF, 1 = ON	SWITCH SETTING 0 = OFF, 1 = ON				NOMINAL CAPACITY (REFERENCE)
		5	6	7	8	
525	1	0	0	0	0	1.5 TON 2 TON 2.5 TON 3 TON
560	1	0	0	0	1	
600	1	0	0	1	0	
650	1	0	0	1	1	
700	1	0	1	0	0	
750	1	0	1	0	1	
800	1	0	1	1	0	
850	1	0	1	1	1	
875	1	1	0	0	0	
950	1	1	0	0	1	
1050	1	1	0	1	0	
1150	1	1	0	1	1	
1250	1	1	1	0	0	
1350	1	1	1	0	1	
1400	1	1	1	1	0	
1600	1	1	1	1	1	

HEATING AIRFLOW - B CABINET		
A/B SWITCH SETTING 0 = OFF, 1 = ON	HEATER KIT INSTALLED (kW)	AIRFLOW (CFM)
1	0	700
1	5	900
1	8	1000
1	10	1100
1	15	1300
1	20	N/A
1	25	N/A

COOLING AIRFLOW - C CABINET						
CMF	A/B SWITCH SETTING * = EITHER	SWITCH SETTING 0 = OFF, 1 = ON				NOMINAL CAPACITY (REFERENCE)
		5	6	7	8	
1100	*	0	0	0	0	3 TON 3.5 TON 4 TON 5 TON
1200	*	0	0	0	1	
1250	*	0	0	1	0	
1300	*	0	0	1	1	
1350	*	0	1	0	0	
1400	*	0	1	0	1	
1450	*	0	1	1	0	
1500	*	0	1	1	1	
1550	*	1	0	0	0	
1600	*	1	0	0	1	
1650	*	1	0	1	0	
1700	*	1	0	1	1	
1750	*	1	1	0	0	
1800	*	1	1	0	1	
1900	*	1	1	1	0	
2000	*	1	1	1	1	

HEATING AIRFLOW - C CABINET		
A/B SWITCH SETTING 0 = OFF, 1 = ON	HEATER KIT INSTALLED (KW)	AIRFLOW (CFM)
*	0	800
*	5	1000
*	8	1200
*	10	1200
*	15	1400
*	20	1600
*	25	1800

NOTES:

- Airflow values listed are for 240V operation. For 208V operation, multiply A & B cabinet values by .95; for C-cabinet values multiply by .90
- When matched with two-stage outdoor units the airflow on low (Y1 or W1) input only will be 70% of the values shown in this table.

This page left intentionally blank



GENERAL TERMS OF LIMITED WARRANTY

Nordyne, LLC will furnish a replacement for any part of this product which fails in normal use and service within the terms and conditions of the warranty.

For complete details of the Limited Warranty, including applicable terms and conditions, see your local installer or contact the Nordyne, LLC warranty department for a copy.

Before purchasing this appliance, read important energy cost and efficiency information available from your retailer. Specifications and illustrations subject to change without notice and without incurring obligations. Printed in U.S.A. (02/25)