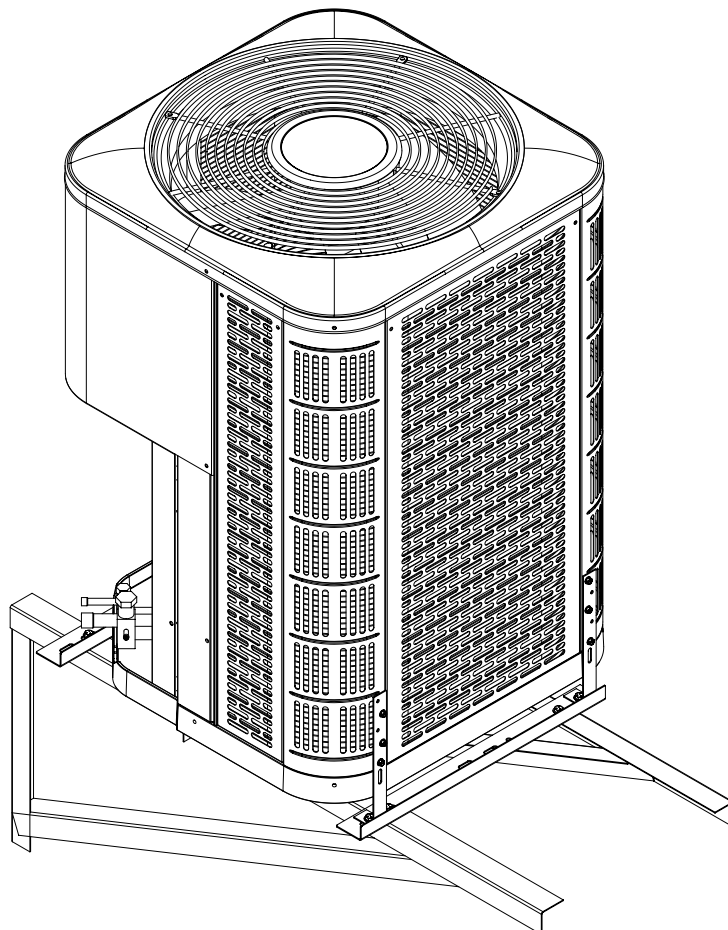


Split System Cantilever Mounting Kit

INSTALLATION INSTRUCTIONS

For Mounting Corner Post / Panel Split System Design to Cantilever Mounts



IMPORTANT

ATTENTION INSTALLERS:

It is your responsibility to know this product better than your customer. This includes being able to install the product according to strict safety guidelines and instructing the customer on how to operate and maintain the equipment for the life of the product. Safety should always be the deciding factor when installing this product and using common sense plays an important role as well. Pay attention to all safety warnings and any other special notes highlighted in the manual. Improper installation of the furnace or failure to follow safety warnings could result in serious injury, death, or property damage.

These instructions are primarily intended to assist qualified individuals experienced in the proper installation of this appliance. Some local codes require licensed installation/service personnel for this type of equipment. Please read all instructions carefully before starting the installation. Return these instructions to the customer's package for future reference.

DO NOT DESTROY. PLEASE READ CAREFULLY & KEEP IN A SAFE PLACE FOR FUTURE REFERENCE.

IMPORTANT SAFETY INFORMATION

Please read all instructions before servicing this equipment. Pay special attention to all safety warnings and any other special notes. Safety markings are used frequently throughout these instructions to designate a degree or level of seriousness and should not be ignored.

WARNING indicates a potentially hazardous situation that if not avoided, could result in personal injury or death.

WARNING:

The safety information listed below must be followed during the installation, service, and operation of this product. Unqualified individuals should not attempt to interpret these instructions or install this equipment. Failure to follow safety recommendations could result in possible damage to the equipment, serious personal injury or death.

- The installer must comply with all local codes and regulations which govern the installation of this type of equipment. Local codes and regulations take precedence over any recommendations contained in these instructions. Consult local building codes and the National Electrical Code (ANSI C1) for special installation requirements.
- Follow all precautions in the literature, on tags and labels provided with the equipment. Read and thoroughly understand the instructions provided with the equipment prior to performing the installation and operational checkout of the equipment.
- This unit is designed for outdoor installations only and should be positioned as shown on page 4.
- Use caution when handling this equipment or removing components. Personal injury can occur from sharp metal edges present in all sheet metal constructed equipment.
- This kit is not a substitute for regions where an extreme wind condition mounting system is required by code.
- Instructions provided with the split system take precedence over any recommendations contained in these instructions.

ABOUT THE KIT

The split system cantilever mounting kit contains components for mounting a corner post/panel design split system (air conditioner or heat pump) to cantilever mounting brackets that are common in the industry.

KIT INSTALLATION

It is recommended that this kit be installed on the unit prior to connecting refrigerant lines and electrical wiring.

Assembly of the Cross Brackets

NOTE: It is critical that the centerline of the mounting holes on the top face of the cantilever mounting brackets are spaced 13.5" apart (center-to-center) when assembling the cantilever mounting brackets to the house.

1. Drill two holes per cantilever mounting bracket at the spacing as shown in Figure 1. **NOTE:** The spacing for these holes are different for large footprint split systems versus small footprint split systems. To determine footprint size see Table 2.
2. Orient both of the cross brackets on the cantilever mounting brackets so that the flat edge with the clearance holes is pointing towards the house as shown in Figure 2 (page 3).
 - The cross brackets are the appropriate length for the large footprint split system.

| DESCRIPTION | QTY |
|--------------------------------|-----|
| 1/4"-20 x 3/4" Bolts | 8 |
| 1/4" Flat Washers | 16 |
| 1/4"-20 Keps Locking Nuts | 8 |
| #10 x 5/8" Self Tapping Screws | 12 |
| Base Mounting Bracket | 4 |
| Cross Bracket | 2 |

Table 1. Materials List

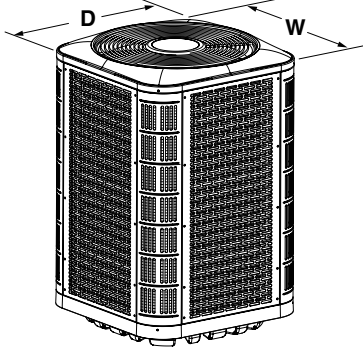
|  | | |
|--|-----------|-----------|
| FOOTPRINT | WIDTH (W) | DEPTH (D) |
| Small | 23 3/4" | 23 3/4" |
| Large | 31 3/4" | 31 3/4" |

Table 2. Footprint Sizes

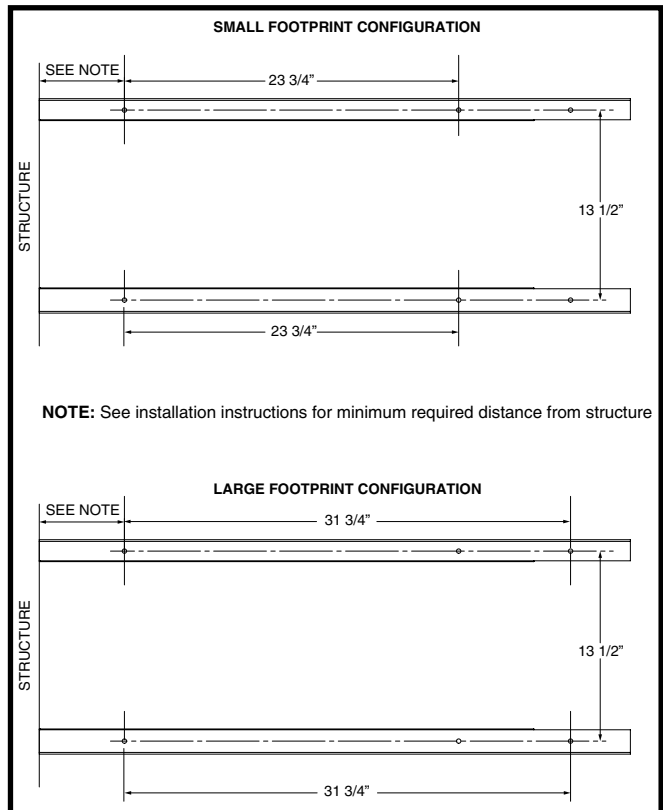


Figure 1. Bracket Hole Locations

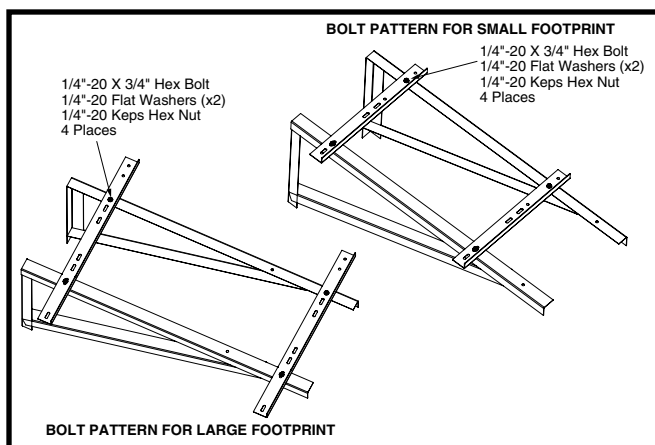


Figure 2. Bolt Patterns

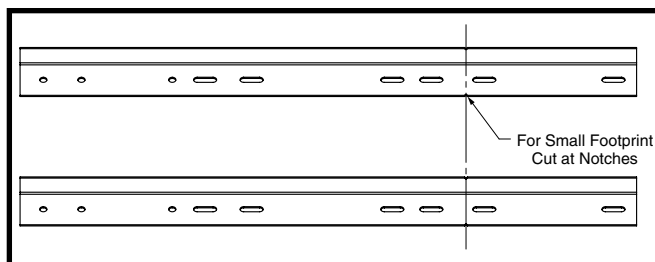


Figure 3. Notch Locations for Small Footprint

- For an application where mounting a small footprint split system, cut the brackets off at the visible notches on the part as shown in Figure 3 (page 3).
3. Fasten the cross brackets to the cantilever mounting brackets using four 1/4\"-20 x 3/4\" bolts, eight 1/4\" flat washers, and four 1/4\"-20 keps locking nuts. See Figure 2 for proper assembly according to footprint size of unit.

Installation of Unit and Base Mounting Brackets

1. Orient the unit on the cantilever mounting kit, centered between the cross brackets as shown in the illustrations below:
 - See Figure 4 for large footprint units with control panel on the left.
 - See Figure 5 for large footprint units with control panel on the right.
 - See Figure 6 for small footprint units with control panel on the left.
 - See Figure 7 for small footprint units with control panel on the right.
2. Loosely attach the four mounting brackets in the four locations specified by configurations shown in Figure 8, Figure 9, Figure 10, Figure 11, and Figure 12 (page 4) using four 1/4\"-20 x 3/4\" bolts, eight 1/4\" flat washers, and four 1/4\"-20 keps locking nuts.
3. Secure the mounting brackets to the unit using only the #10 x 5/8\" self tapping sheet metal screws provided in this kit.
 - Each bracket has 5 holes but only 3 will be used per bracket.
 - Each bracket requires 3 screws to secure the unit. The screws should be driven into the corner posts (CP1 & CP2) and back post (BP1 or BP2) only, depending on which post they are installed on. To determine which holes in each bracket to use, see Figure 8, Figure 9, Figure 10, Figure 11, & Figure 12.
 - The screws used in this kit must be properly installed so that the head of the fastener engages the bracket and anchors it securely.
- d. Install the brackets to the corner post and back posts in a location that will still allow the technician to remove the panels.
4. Fully tighten the bolts in Step 2.

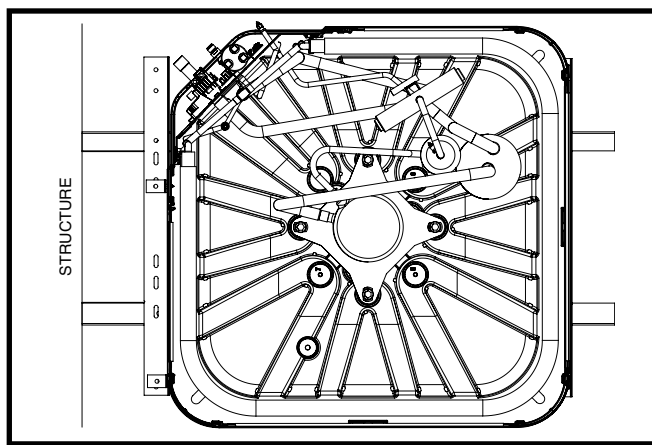


Figure 4. Large Footprint - Control Panel Left

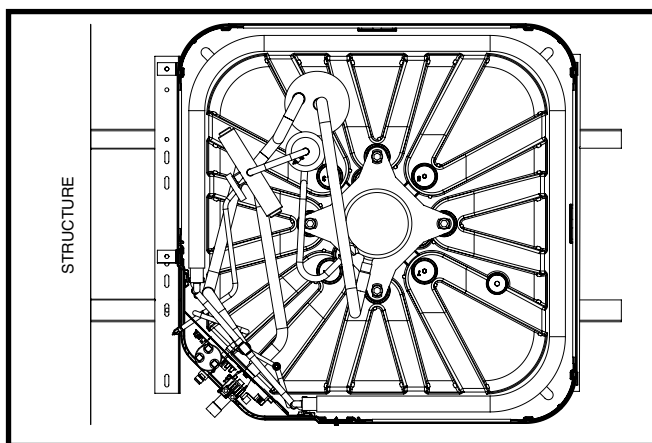


Figure 5. Large Footprint - Control Panel Right

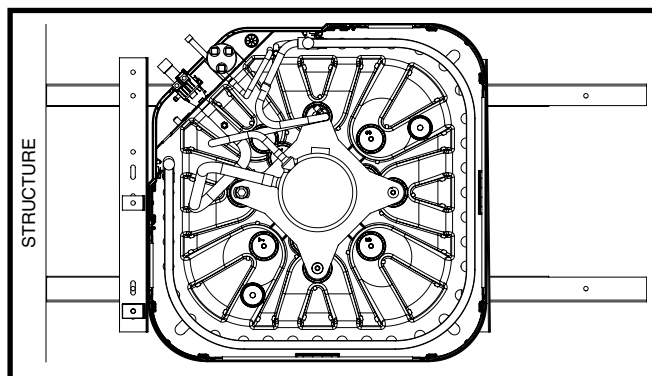


Figure 6. Small Footprint - Control Panel Left

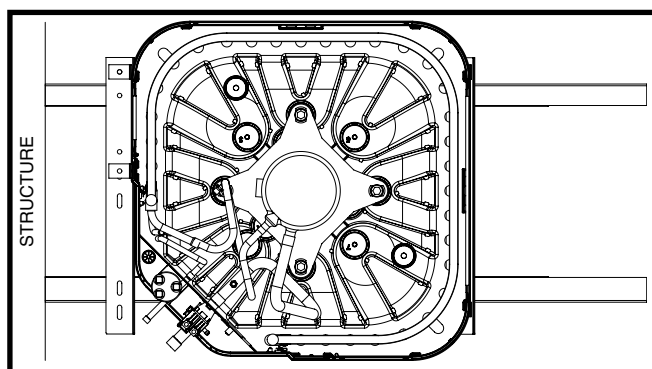


Figure 7. Small Footprint - Control Panel Right

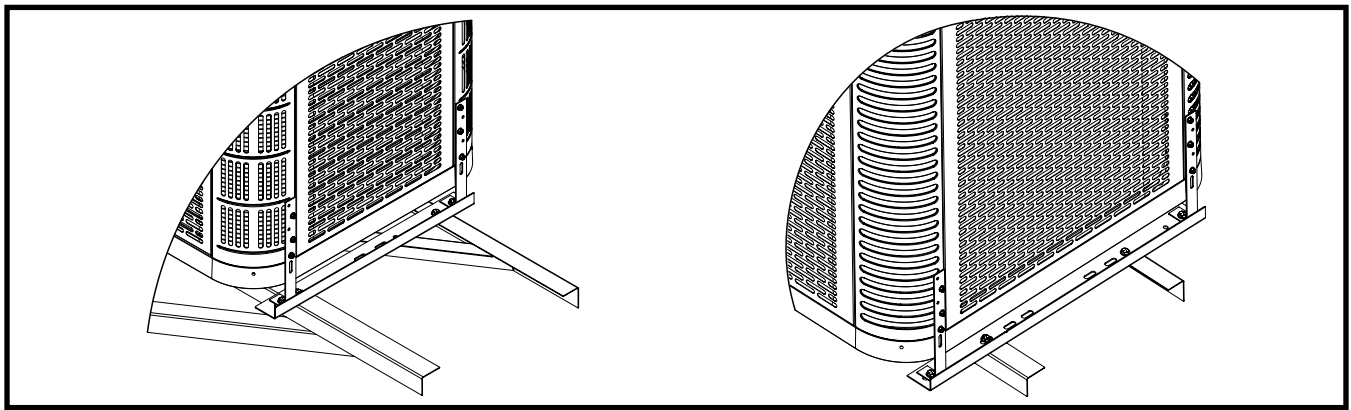


Figure 8. Front Brackets For Large and Small Footprint

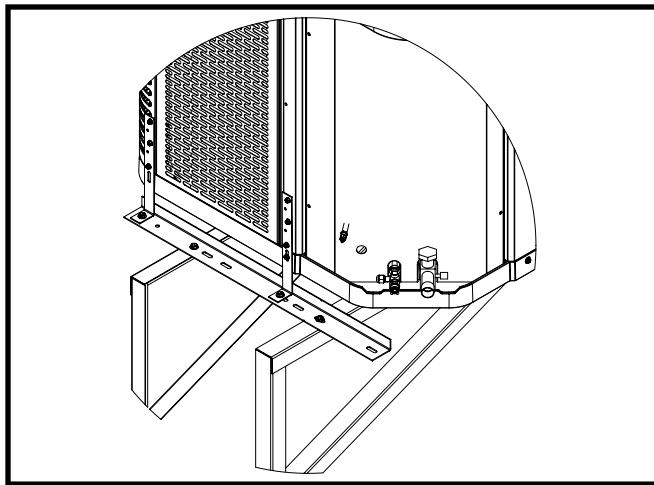


Figure 9. Rear Brackets For Large Footprint - Control Panel Right

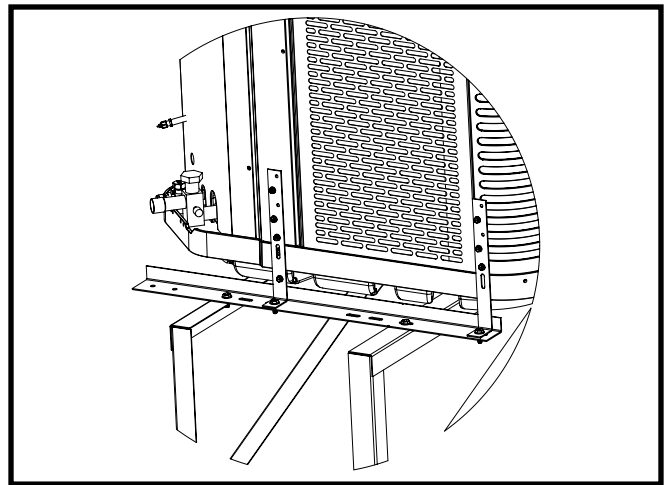


Figure 11. Rear Brackets For Large Footprint - Control Panel Left

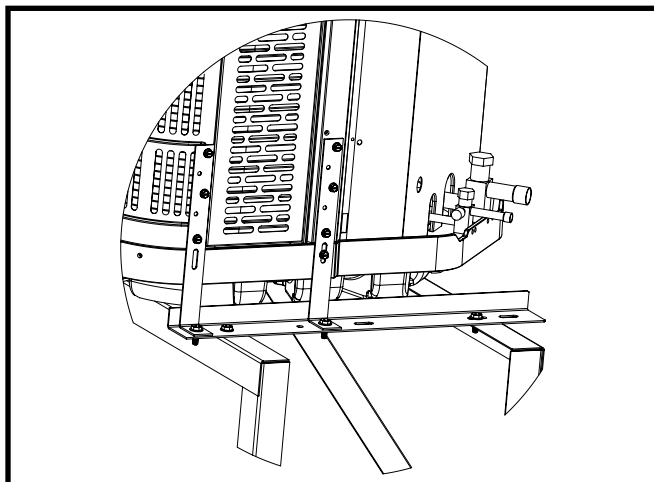


Figure 10. Rear Brackets For Small Footprint - Control Panel Right

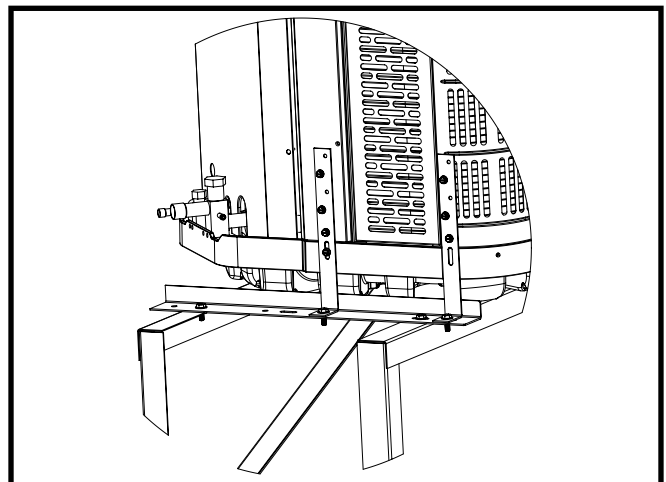


Figure 12. Rear Brackets For Small Footprint - Control Panel Left

