

## FG6TE Series

### High Efficiency / Direct Vent or Non Direct Vent 2-Stage Condensing Gas Furnace with iQ<sup>Drive</sup> Variable Speed Blower For use with FS4BI (23 Seer) Condensing Unit

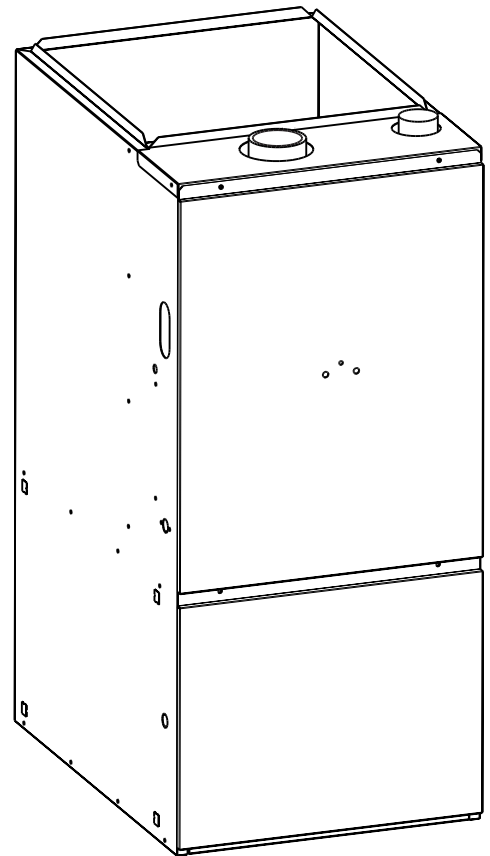
#### 95+ Upflow/Horizontal

The high efficiency 2-Stage gas furnace may be installed free standing in a utility room, basement, or enclosed in an alcove or closet. The upflow model converts easily to horizontal application. The extended flush jacket provides a pleasing “appliance appearance.” Design certified by CSA International (Canadian Standards Association).

#### Features and Benefits

- **Warranty**
  - This product offers a 10-year All-Parts Warranty.
  - This product offers a 10 year Quality Pledge to replace the entire unit, if the unit's major component (heat exchanger or compressor) fails within the first 10 years of operation, to the original owner. All split system products must be installed with a matched indoor air handler or indoor coil to qualify.
  - Consumer product registration required for both 10 year All Parts Warranty and Quality Pledge within a limited period of time after the installation. See current warranty document or visit our consumer web site listed on the back of this document for warranty details.
  - Also when registered, this furnace upgrades to a limited lifetime heat exchanger warranty.
- **100% fired and tested** – All units and each component (both mechanical and electrical) are tested on the manufacturing line.
- **Best packaging in the industry** – Unique design assures product will arrive to the homeowner dent free.
- **Clean, quiet, and efficient operation** – Due to the unique design of in-shot burners, location of inducer, use of insulation, and operating at low fire using less fuel than single capacity furnaces.
- **Fixed 30 second blower delay** at burner start-up assures a warm duct temperature at furnace start-up.
- **Fixed 30-second inducer post purge** increases life of heat exchanger.
- **Dependable, hot surface ignitor** – Innovative application of an appliance type ignitor with a 20-year history of reliability, assures no call-backs because of handling.
- **Color coded wire harness** – Designed to fit the components, all with quick-connect fittings for ease of service and replacement.
- **Reliable heat exchanger** – Aluminized primary and stainless steel secondary heat exchanger assures long life.
- **40-second fixed cooling cycle blower-off delay (TDR)** increases cooling performance when matched with a NORDYNE coil.
- **Approved for direct vent and non direct vent furnace, category IV venting system** – May be vertically or horizontally vented using either a one-pipe or two-pipe system for maximum flexibility in installation.
- **iQ Drive variable speed blower** included to maximize air conditioner efficiencies.
- **LP convertible** – Simple burner orifice and regulator spring change for ease of convertibility.
- **Factory installed drain system** – for reliable performance.
- **Diagnostic light flashes identify limit failure, pressure switch failure and improper ground and polarization** – for easy troubleshooting.
- **Incorporates integrated control board** with connections for electronic air cleaner and humidifier.
- **Two piece door design** enhances furnace appearance and uses screw fasteners for great fit and accessibility.
- **3 amp fuse** protection against low voltage shorts; protects transformer and control board.
- **Low voltage terminal board** for easy field wiring.

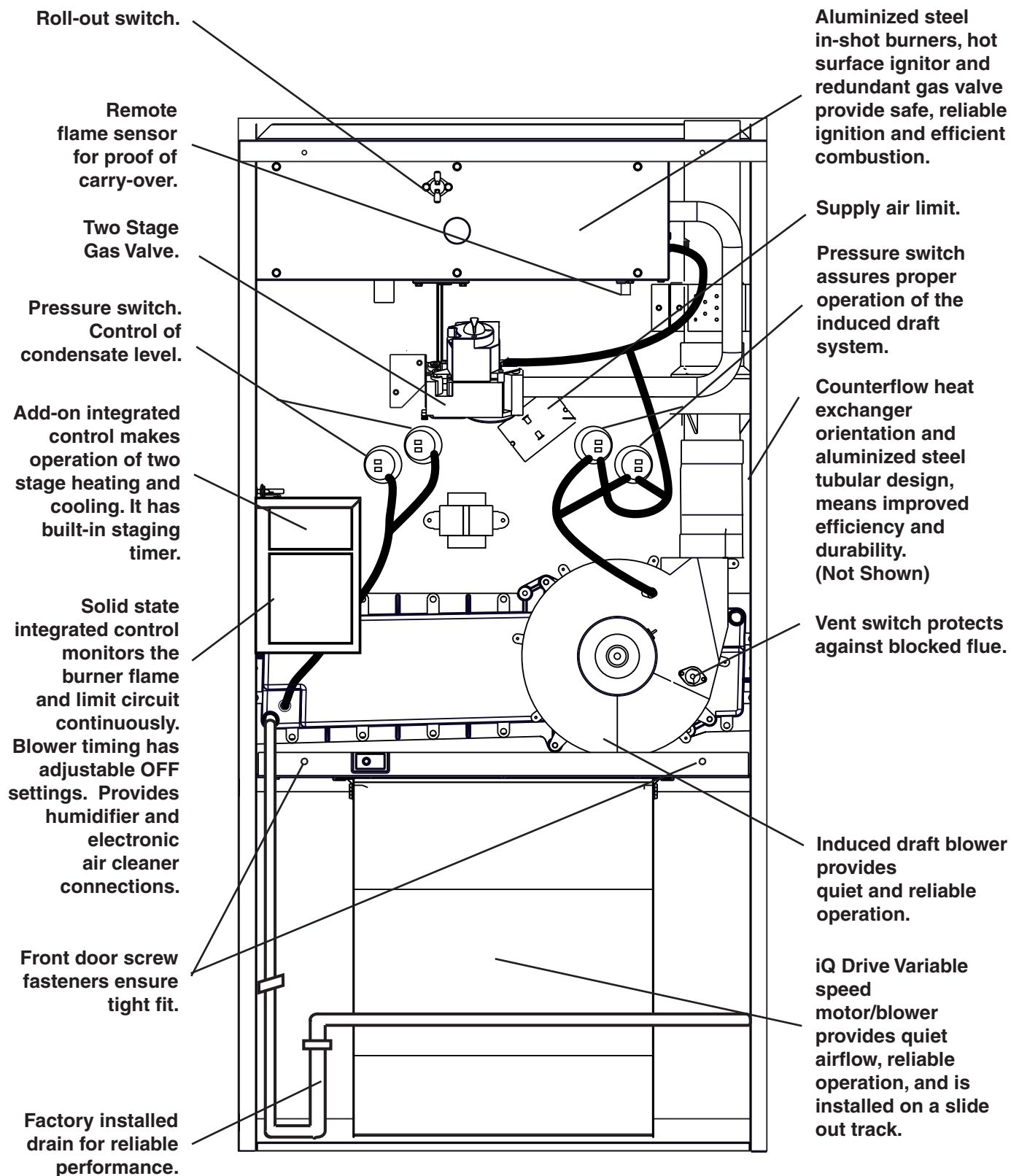
Upflow/  
Horizontal  
Gas  
Furnace  
Shown





## FEATURES

### High Efficiency Upflow 95+ Gas Furnace



## STANDARD EQUIPMENT

Direct vent; draft inducer; pressure switch; redundant main gas control; hot-surface ignition; timed ON/OFF blower controls (TDR); 60VA transformer for air conditioner application; limit controls; direct drive motor; all models can be converted to use L.P. (propane) gas. Factory approved kits *only* must be used and are available as an optional accessory from your NORDYNE distributor.

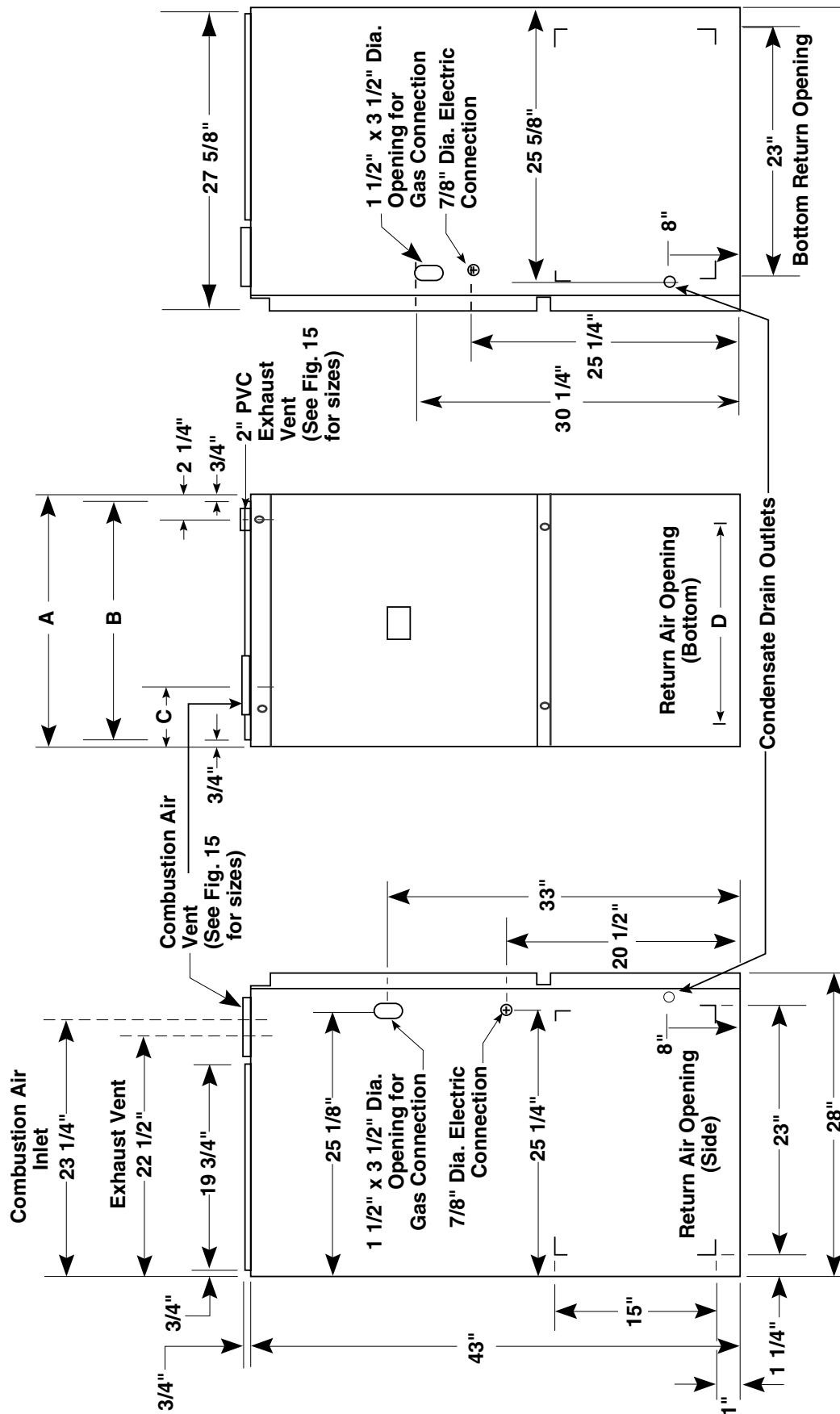
## SPECIFICATIONS

MODEL NUMBER *TE	060(C,N)-IQ	080(C,N)-IQ	100(C,N)-IQ	120(C,N)-IQ
High Fire Rated Input(Btu/h) (a)	60,000	80,000	100,000	120,000
High Fire Heating Capacity(Btu/h)	57,000	76,000	95,000	114,000
Low Fire Rated Input(Btu/h) (a)	42,000	56,000	70,000	84,000
Low Fire Heating Capacity(Btu/h)	40,000	53,000	67,000	72,000
<b>AFUE</b>	<b>95.5</b>	<b>95.1</b>	<b>95.1</b>	<b>95.1</b>
Maximum Heating Ext. St. Press.(in WC)	0.5	0.5	0.5	0.5
Blower Wheel D x W	11 x 10	11 x 10	11 x 10	11 x 10
Motor H.P. -Type	3/4 - IQ Drive	3/4 - IQ Drive	3/4 - IQ Drive	3/4 - IQ Drive
Motor FLA	8.1	8.1	8.1	8.1
High Fire Temperature Rise Range(F)	35-65	30-60	40-70	45-75
Low Fire Temperature Rise Range(F)	30-60	30-60	40-75	45-75

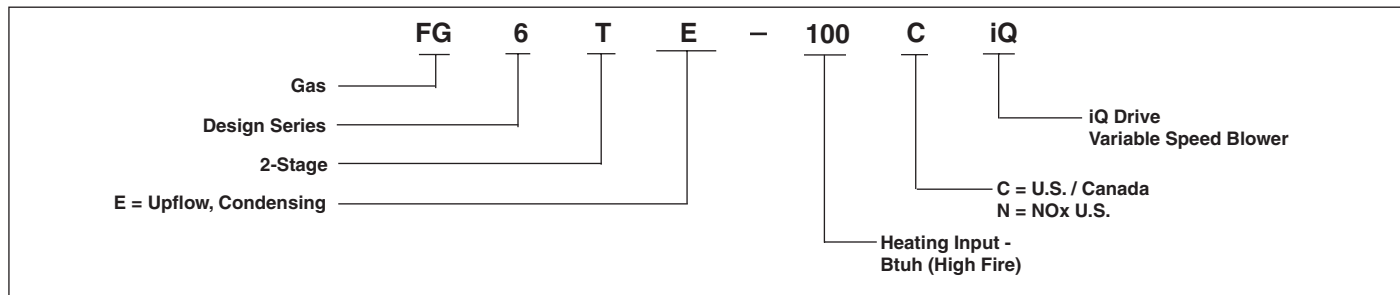
## DIMENSIONS

## Upflow/Horizontal Furnace

Model Number FG6TE-	High Fire Furnace Btuh	Low Fire Furnace Input	Temperature Rise Range, °F		Dimensions (inches)				Shipping Weight (lbs)
			1st Stage	2nd Stage	A	B	C	D	
060	60,000	42,000	35-65	35-65	19 3/4	18 1/4	7 7/8	17 1/4	195
080	80,000	56,000	30-60	30-60	19 3/4	18 1/4	7 7/8	17 1/4	195
100	100,000	70,000	40-70	40-70	19 3/4	18 1/4	7 7/8	17 1/4	200
120	120,000	84,000	45-75	45-75	22 1/2	21	9 1/4	20	220



## MODEL IDENTIFICATION CODE



## VENTING

All models are approved for vertical non direct (1 pipe) and direct (2 pipe) venting applications. See Vent Table below for specified sizes and allowable lengths.

## VENT TABLE

APPLICATION	SINGLE PIPE LENGTH (ft.) with 1 long radius elbow**		DIRECT VENT, DUAL PIPE LENGTH (ft.) with 1 long radius elbow on each pipe**					
	Outlet	Outlet	Inlet/Outlet		Inlet/Outlet		Inlet/Outlet	
PVC, CPVC or ABS SCH. 40 Pipe Size	2"	3"	2"	2"	3"	2"	3"	3"
Models *TE 060	65	200	30	30	40	40	110	110
Models *TE 080	45	200	30	30	40	40	110	110
Models *TE 100	40	200	25	25	40	40	110	110
Models *TE 120	40	200	20	20	40	40	110	110

### \*\* NOTES

- 3.5' for each additional 3" **long** radius elbow, and 7' for each additional 3" **short** radius elbow.
- Two 45 degree elbows are equivalent to one 90 degree elbow.
- Do not include termination elbows in calculation of vent length.
- This table is applicable for elevations from sea level to 2000 ft. For higher elevations decrease vent pipe lengths by 8% per 1000 ft. of altitude.
- Only the above pipe materials are approved for use with these condensing furnaces.

## ACCESSORIES

Kit	Order Number
U.S. LP Conversion Kit (0 to 10,000 ft.)	904404
Canadian LP Gas Conversion Kit (0 to 4,500 ft.)	904405
Side Return Filter Kit	541036
Bottom Return	B Cabinet 903089
Horizontal Installation	C Cabinet 903090
Internal Side Return Filter Wire	903152
Horizontal Installation Kit	903568
Add-on control Replacement Kit	904580
High Altitude Pressure Switch Kit (5,000 ft. to 10,000 ft. above sea level)	903852

## VENT KITS

Kit Description	Order Number
2" Concentric Vent Kit	904177
3" Concentric Vent Kit	904176
Neutralizer Kit (all models)	902377
Side Wall Vent Kit - 3"	904347
Side Wall Vent Kit - 2"	904617

## ELECTRICAL DATA

Furnace Input (Btuh)	Cabinet Width (in.)	Nominal Electrical Supply	Maximum Operating Voltage	Minimum Operating Voltage	Maximum Furnace Amperes	Minimum Wire Gauge	Maximum Fuse or Circuit Breaker Amps*
60,000	19.75	115-60-1	127	103	12	14	15
80,000	19.75	115-60-1	127	103	12	14	15
100,000	19.75	115-60-1	127	103	12	14	15
120,000	22.50	115-60-1	127	103	12	14	15

\* Time-delay fuses or HACR-type circuit breakers are required.



