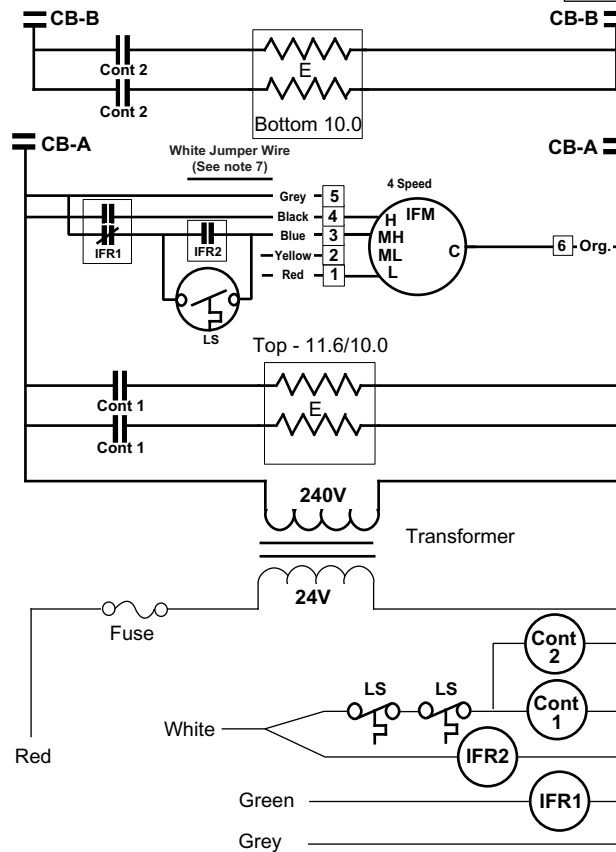


**Models: E2EB-020HB, 023HB, 023HB - 5 TON**



**Switch circuit breakers to the “off” position before servicing the furnace.**



- 1) See unit data label for recommended supply wire sizes.
- 2) Thermostat anticipator setting : 0.75 Amps
- 3) To change blower speed on units without a relay box installed refer to installation instructions
- 4) Refer to furnace and/or relay box installation instructions for thermostat connections.
- 5) If any wire in this unit is to be replaced it must be replaced with 105° C thermoplastic copper wire of the same gauge.
- 6) Not suitable for use on systems exceeding 120V to ground.
- 7) This wire is used with some accessories. See accessory Installation Instructions for further detail.
- 8) Refer to Installation Instructions for complete wiring diagram.

**CB = Circuit Breaker**  
**E = Heater Element**  
**IFR = Fan Relay**  
**IFM = Fan Motor**  
**Cont = Contactor**  
**LS = Limit Switch**  
☐ = Fan Plug

