

Motor Settings

Delay Settings (all models)

Delay Desc	Switch Number	
	7	8
Delay A	0	0
Delay B	0	1
No Delay	1	0
De-Hum	1	1

**NOTE: 1 = ON
0 = OFF**

CFM			Switch Number			
A-Cabinet	B-Cabinet	C-Cabinet	1	2	3	4
540	720	1075	0	0	0	1
600	800	1225	0	0	0	0
660	880	1380	0	0	1	0
715	850	1135	1	0	0	1
790	945	1295	1	0	0	0
870	1040	1460	1	0	1	0
915	1085	1525	0	1	0	1
955	1140	1625	1	1	0	1
1015	1205	1740	0	1	0	0
1060	1325	1960	0	1	1	0
1075	1265	1860	1	1	0	0
1165	1390	2090	1	1	1	0

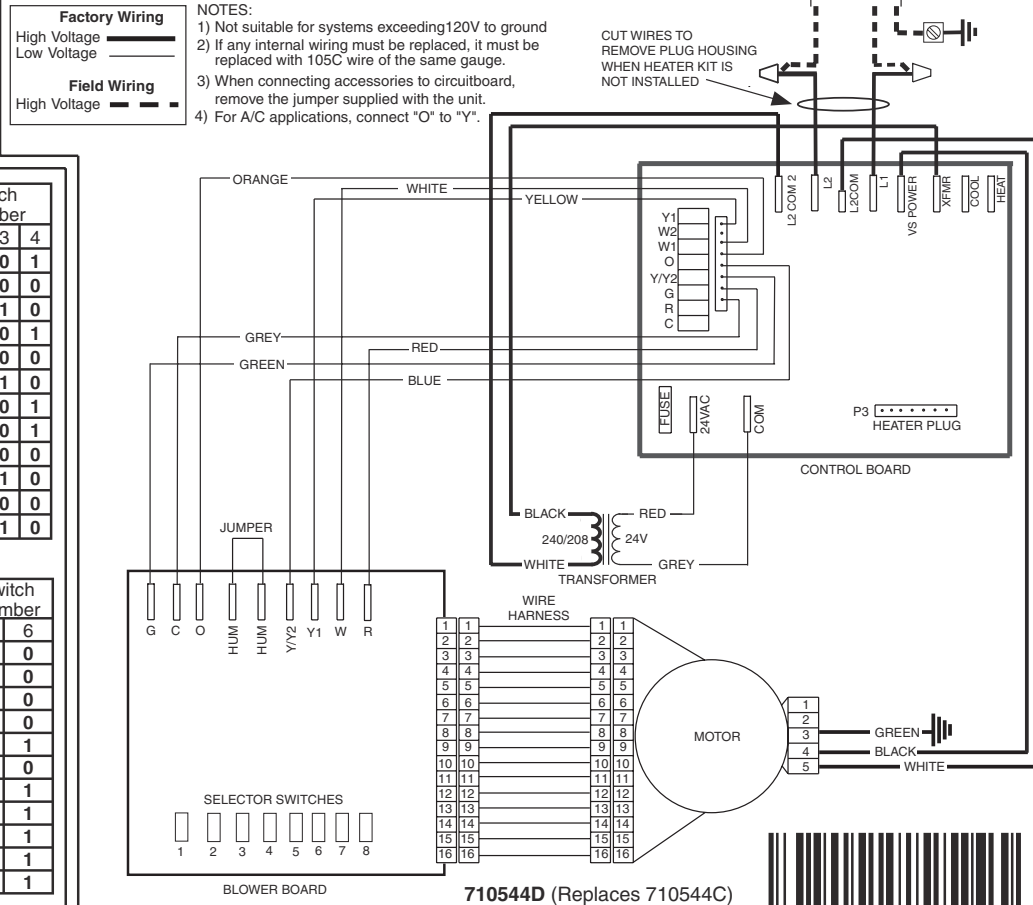
Minimum Electric Heat Air-Flow

Nom. KW	CFM			Switch Number	
	A-Cabinet	B-Cabinet	C-Cabinet	5	6
0-5	700	700	-	0	0
0-9	-	-	700	0	0
6-9	800	-	-	1	0
6-10	-	800	-	1	0
10-14	950	-	-	0	1
10-14	-	-	950	1	0
11-15	-	950	-	0	1
15	1100	-	-	1	1
15-20	-	-	1100	0	1
16-20	-	1100	-	1	1
21-30	-	-	1500	1	1

(Modular blower supports 20kW heat max.)

WIRING DIAGRAM

Variable Speed Air Handler



710544D (Replaces 710544C)

