

WIRING DIAGRAM

Dual Fuel Heating and Cooling Packaged System 208/230 Volt

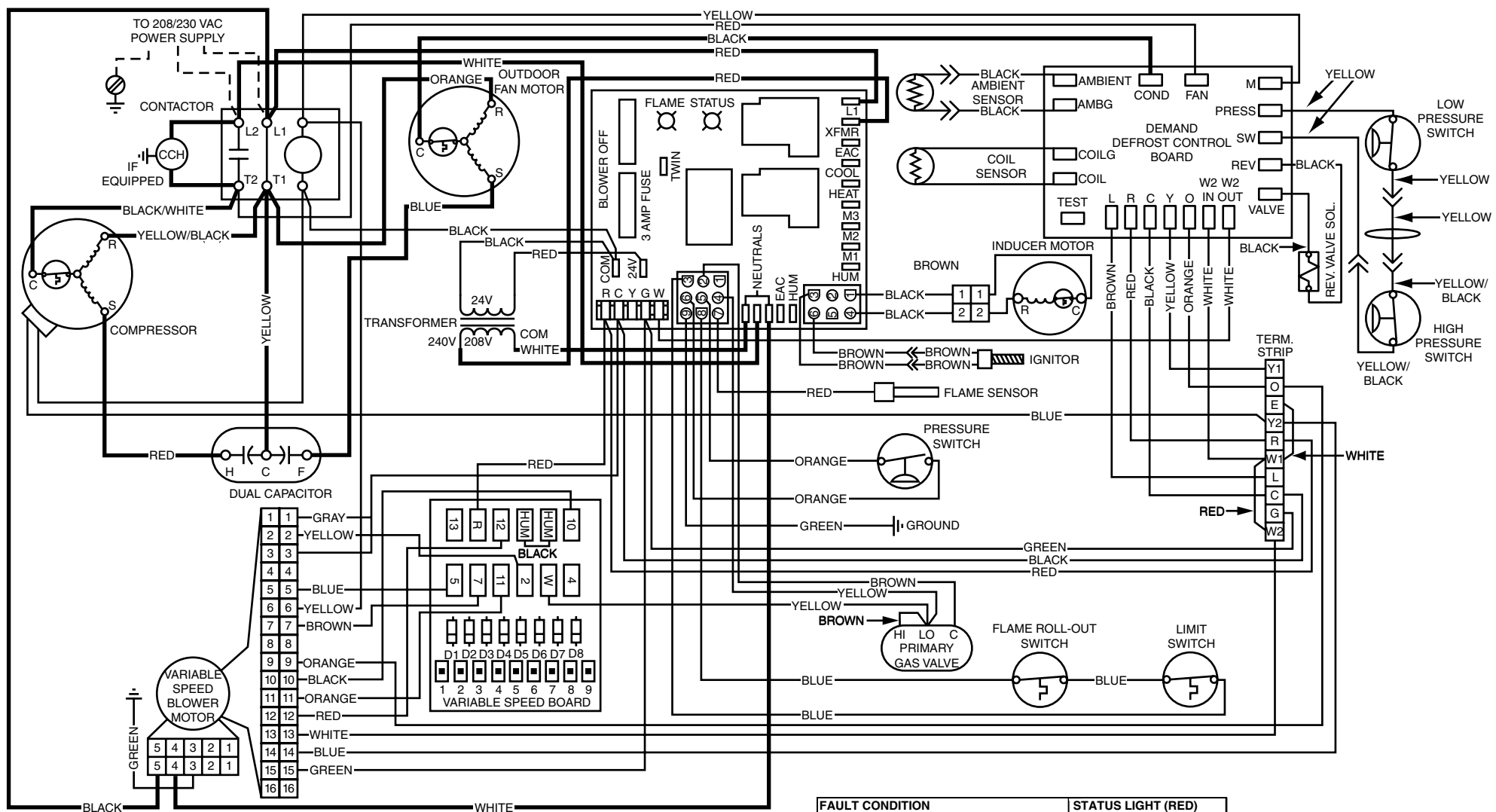
Single Phase / 60 Hz.

NOTES:

1. Disconnect power before servicing.
2. For supply connections use copper conductors only.
3. Not suitable on systems that exceed 150V to ground.

4. If any of the original wire as supplied with the furnace must be replaced, it must be replaced with wiring material having a temp. rating of at least 105°C.
5. For supply wire ampacities and overcurrent protection, see unit rating plate.
6. Ensure that wires from the blower remain connected to the board thermostat terminals after making the field thermostat connections.

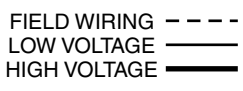
7. Wiring shown for single stage operation. For two stage operation, move brown wire from low side of the gas valve to W2 on the terminal block and remove jumper from W1 to W2. See installation instructions for an alternate means of controlling second stage.
8. A heat pump thermostat with fossil fuel back-up heat capability is REQUIRED for this system.



NOTES:

1. Couper le courant avant de faire le retien.
2. Employez uniquement des conducteurs en cuivre.
3. Ne convient pas aux installations de plus de 150 V a la terre.

LEGEND:



DEFROST BOARD OPERATION:

- 1 Heat Pump operates in heating mode until the combination of outdoor ambient and outdoor coil temperatures initiate a defrost cycle. The outdoor coil temperature must be at or below 32°F before the defrost cycle begins.
- 2 There must be a minimum of 20 minutes between defrost cycles. After this time, temperature conditions must call for defrost continuously for 4 1/2 minutes before a defrost cycle is initiated.
- 3 The defrost cycle ends when the outdoor temperature reaches 32°F or the defrost terminate time of 13 minutes 39 seconds is reached.

FAULT CONDITION	STATUS LIGHT (RED)
Power On	On
Limit Circuit Open	1 Flash
Pressure Switch Stuck Open with Inducer On	2 Flashes
Pressure Switch Stuck Open with Inducer Off	3 Flashes
Ignition Failure (Check Ground)	4 Flashes
230 VAC & Neutral Reversed or No Ground	5 Flashes
False Flame or Gas Relay Shorted	Continuous Flash
Power Off	Off
FAULT CONDITION	STATUS LIGHT (YELLOW)
Low Flame Sensor Signal	Continuous Flash
Flame Present	On



7110720
(Replaces 7108140)