

# WIRING DIAGRAM

## Packaged Two Stage Heat/Two Stage Electric Air Conditioner

208/230 Volt Single Phase

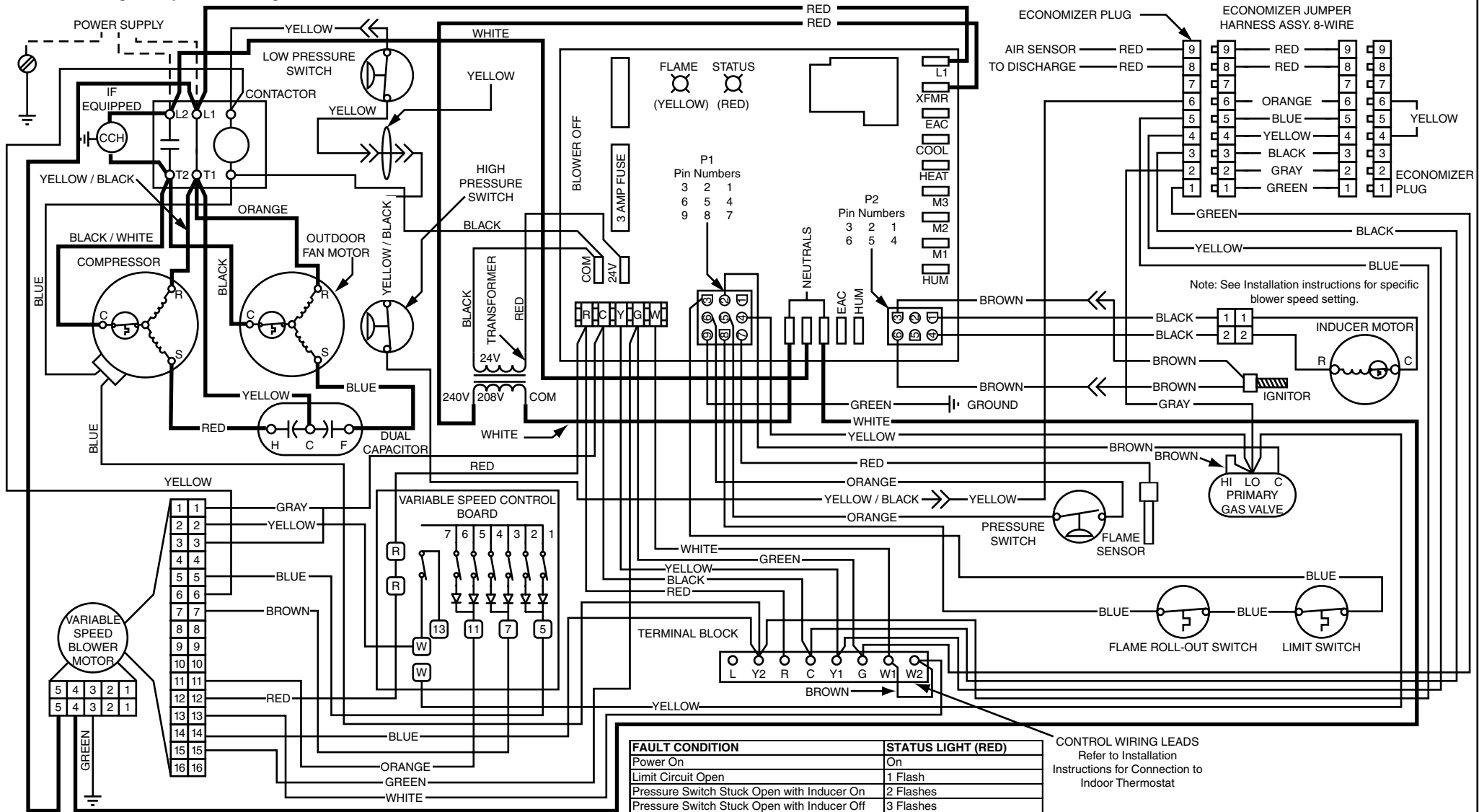
60Hz

### NOTES:

1. Disconnect power before servicing.
2. For supply connections use copper conductors only.
3. Not suitable on systems that exceed 150V to ground.
4. If any of the original wire as supplied with the furnace must be replaced, it must be replaced with wiring material having a temperature rating of at least 105°C.

5. For supply wire ampacities and overcurrent protection, see unit rating plate.
6. Ensure that wires from the blower remain connected to the board thermostat terminals after making the field thermostat connections.

7. Wiring shown for single stage operation. For two stage operation move Brown wire from low side of Gas Valve to W2 on the Terminal Block and remove Jumper from W1 to W2.



FAULT CONDITION	STATUS LIGHT (RED)
Power On	On
Limit Circuit Open	1 Flash
Pressure Switch Stuck Open with Inducer On	2 Flashes
Pressure Switch Stuck Open with Inducer Off	3 Flashes
Ignition Failure (Check Ground)	4 Flashes
230 VAC & Neutral Reversed	5 Flashes
False Flame or Gas Relay Shorted	Continuous Flash
Power Off	Off
FAULT CONDITION	STATUS LIGHT (YELLOW)
Low Flame Sensor Signal	Continuous Flash
Flame Present	On

CONTROL WIRING LEADS  
Refer to Installation  
Instructions for Connection to  
Indoor Thermostat

### LEGEND:

- FIELD WIRING - - - - -
- LOW VOLTAGE ———
- HIGH VOLTAGE ———

### NOTES:

1. Couper le courant avant de faire letretien.
2. Employez uniquement des conducteurs en cuivre.
3. Ne convient pas aux installations de plus de 150 V a la terre.



7110830  
(Replaces 708570B)