

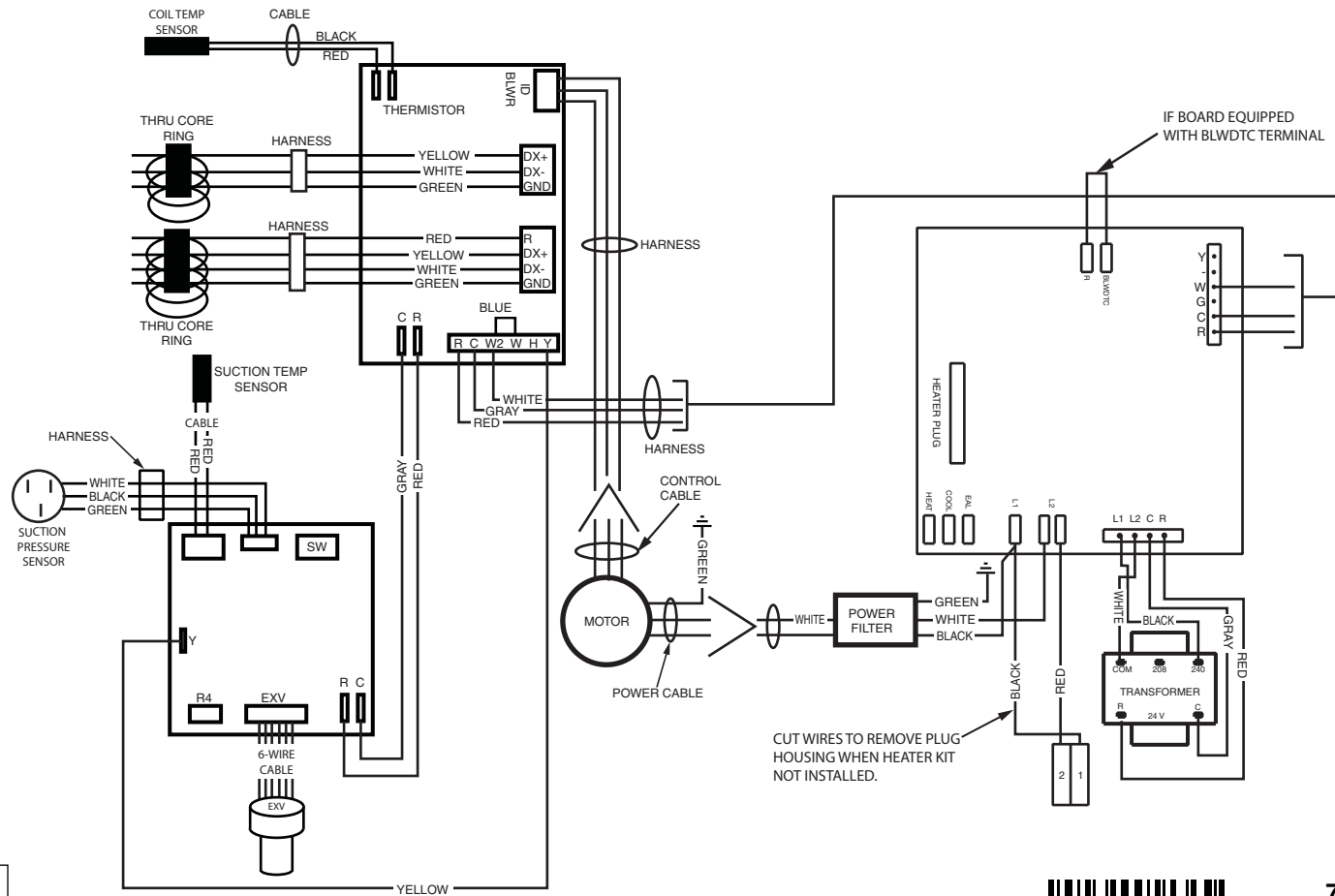
WIRING DIAGRAM

Air Handler with iQ Drive

NOTES:

1. The blower motor speed tap connection may not be as shown. See the Installation Instructions.
2. Disconnect all power before servicing.

3. Transformer may have a dual voltage primary tap. Match the tap position with the supply voltage used.
4. If the internal wiring is replaced, use only 105°C copper wire of the same gauge.



LEGEND:

FIELD WIRING	----
LOW VOLTAGE	————
HIGH VOLTAGE	—————



711226B
 (Replaces 711226A)
 06/12