

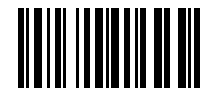
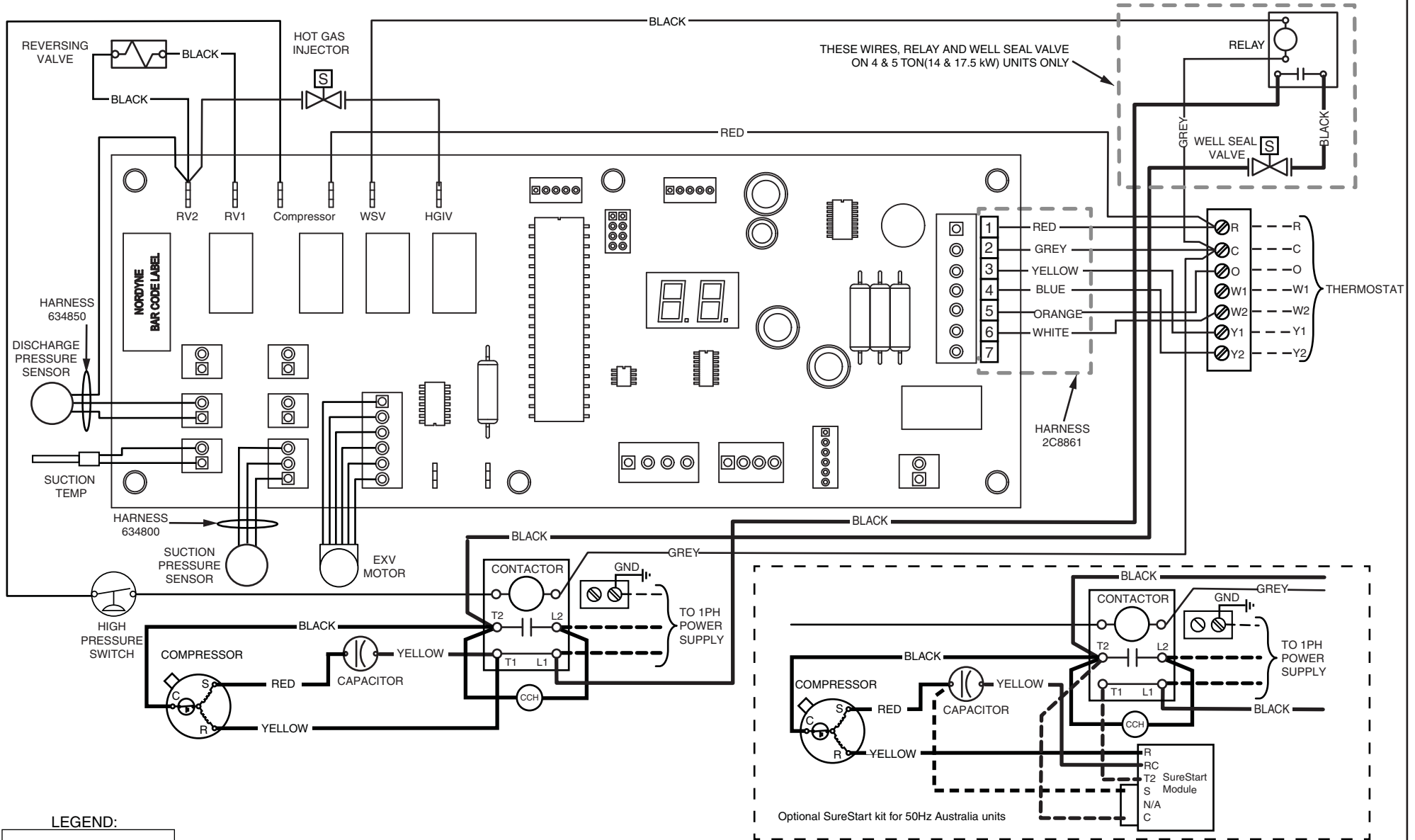
# WIRING DIAGRAM

## Y1SA Geothermal Heat Pump System

1 Phase

**NOTES:**

- |   |   |  |
|---|---|--|
| 1. Disconnect all power before servicing.                     | 5. For ampacities and overcurrent protection, see unit rating plate.  | 1. Couper le courant avant de faire letretien.                       |
| 2. For supply connections use copper conductors only.         | 6. Connect to 24 vac/60va/class 2 circuit. See air handler installation instructions for control circuit and optional relay/transformer kits. | 2. Employez uniquement des conducteurs en cuivre.                    |
| 3. Not suitable on systems that exceed 150 volts to ground.   |   | 3. Ne convient pas aux installations de plus de 150 volt a la terre. |
| 4. For replacement wires use conductors suitable for 105 deg. |   |  |



**711415C**  
 (Replaces 711415B)  
 07/15