

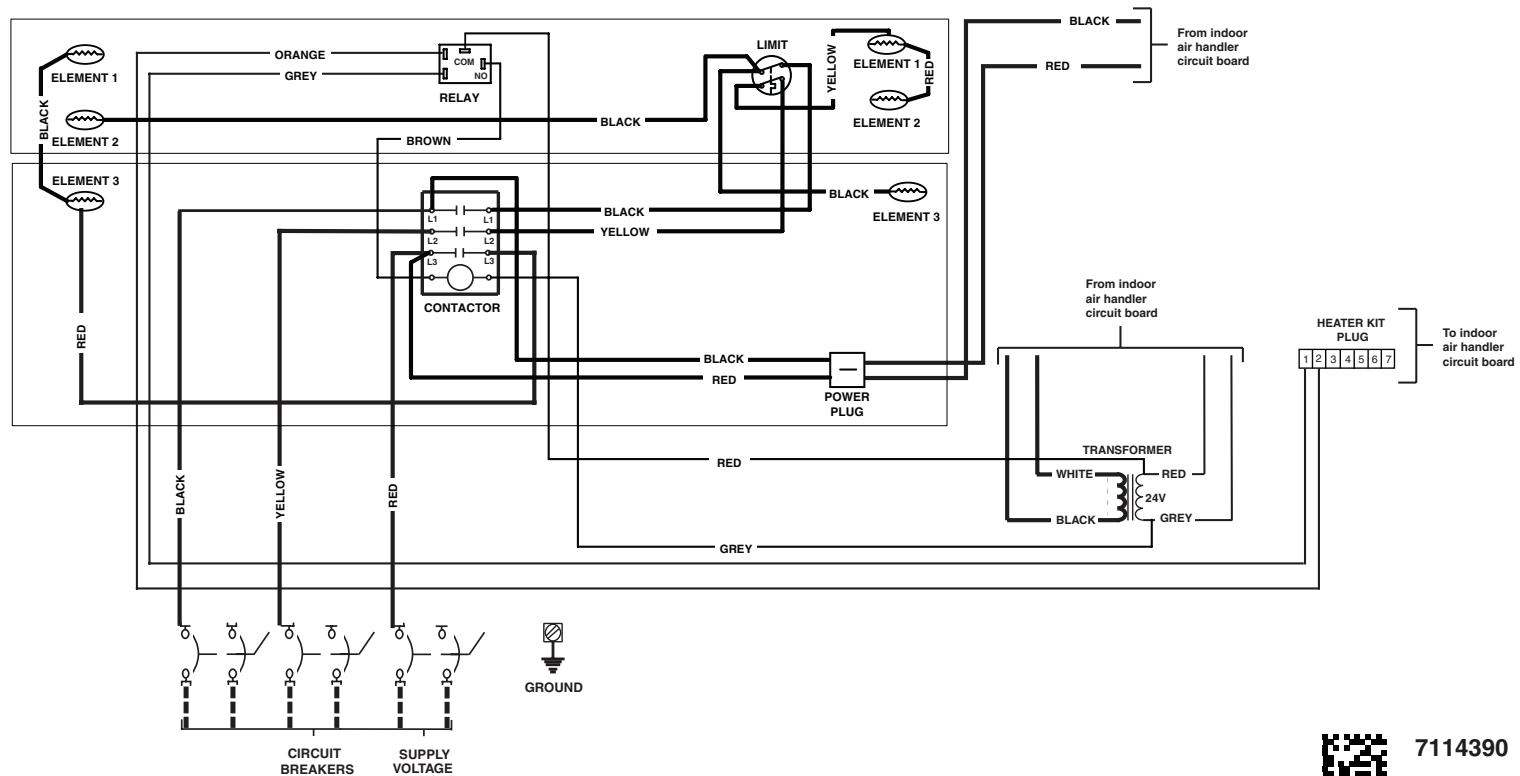
WIRING DIAGRAM

H8HK 3-Phase Electric Heater Kit, 208/240V

NOTES

1. The blower motor speed tap connection may not be as shown. See the Installation Instructions.
2. Disconnect all power before servicing.
3. Transformer may have a dual voltage primary tap. Match the tap position with the supply voltage used.
4. If the internal wiring is replaced, use only 105°C copper wire of the same gauge.

Legend	
Field Wiring	---
Factory Wiring:	
Low Voltage	—
High Voltage	—



7114390

08/14