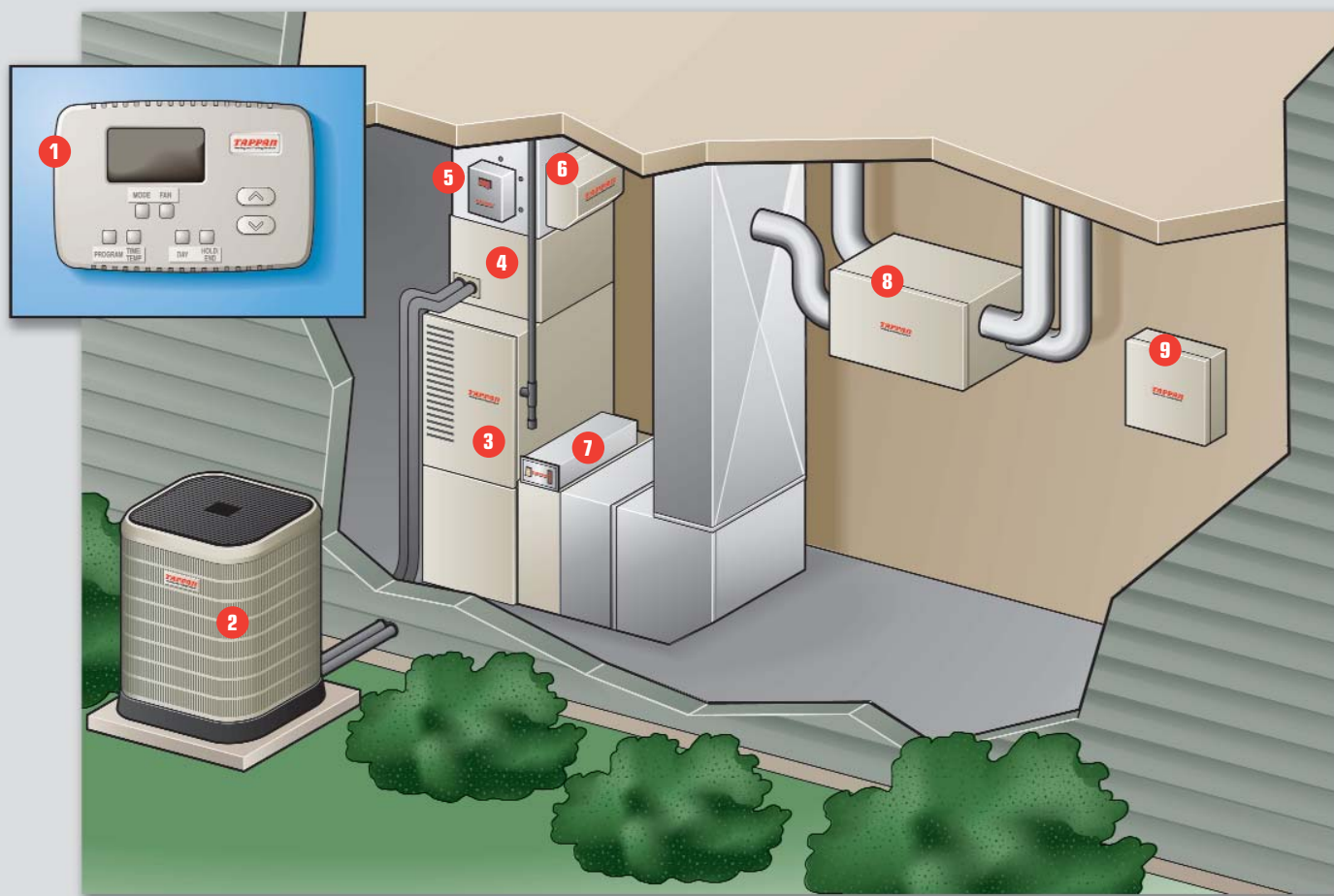


TOUGH.
SMART.
TAPPAN.™

Putting It All Together With Quality Service.

To learn how you can get the most comfort—and biggest return in energy savings from a totally integrated indoor comfort system, talk to your Tappan dealer. From thermostats, to air cleaners, matched coils for new condensing units, humidity and zone control systems, and other indoor air quality accessories, you're sure to get tough, dependable technology that's built to last. All of which makes you one very smart customer. Tough. Smart. Tappan.™



- | | | |
|--------------------------------|-------------------|------------------------------|
| 1 Programmable thermostat | 4 Evaporator coil | 7 Air cleaner |
| 2 Air conditioner or heat pump | 5 UV air purifier | 8 Energy recovery ventilator |
| 3 Gas furnace or air handler | 6 Humidifier | 9 Zone control panel |

TAPPAN
Heating and Cooling Products

Trademark Tappan used under license. © 2007 NORDYNE
www.tappan.net

PUBLICATION SERIAL #727B-0207
Specifications and illustrations subject
to change without incurring obligation.
Pictured installation varies per household.



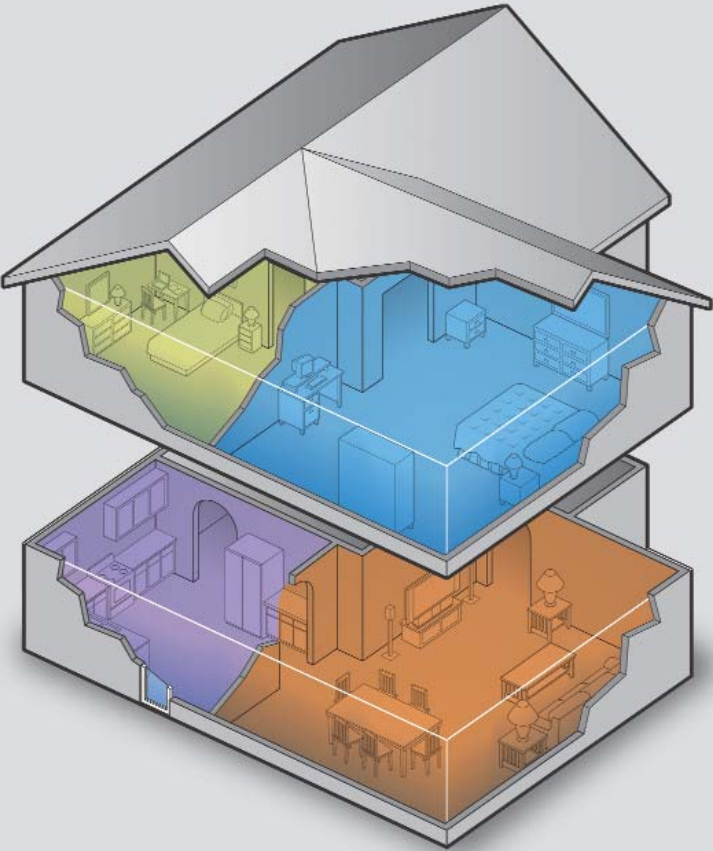
TAPPAN

Tappan Tough™ 10-Year Warranty.

Because Tappan equipment is built-tough for the long run, our zoning system is backed by a warranty that affords genuine peace of mind. Parts for the complete system are covered for up to 10 full years when installed and registered with a matched Tappan system. Ask your Tappan dealer or go to www.tappan.net for warranty details.



Controlled Comfort. Zone-By-Zone Where You Need It.



Zoning is a relatively new concept but it's quite simple to explain. Instead of trying to heat or cool an entire house with one thermostat, living spaces are essentially divided into separate comfort zones. Either room-by-room, or by a group of rooms, each zone is monitored by its own thermostat to dictate the ideal temperature.

The system consist of a series of pneumatically-operated dampers independently opened and closed within existing duct work by a programmable control panel. With Tappan's Zoning System, you can customize comfort settings to handle up to 8 zones. Air flow can then be selectively channeled where it's needed depending on changing climate conditions, or activities during the course of a day.

An infant's room, for example, may continue to receive more cooled air in the summer upstairs when it's hotter, while unused bedrooms, or living spaces downstairs require less.

Then, in winter, when less heat is needed upstairs and lower living spaces are typically cooler, these areas can be similarly zoned to compensate for uncomfortable temperature variations.



Bedroom Thermostat



Kitchen Thermostat



Living Room Thermostat



Zone Control Panel



Heating and Cooling System



Bedroom Zone



Kitchen Zone



Living Room Zone

Floor Plan Challenges. No Problem.

Aside from the obvious benefits of controlling temperature swings between upstairs and downstairs, zoning can also remedy a host of other problematic scenarios. Vaulted ceilings, great rooms with connected kitchen and dining spaces, expanses of glass windows exposed to the sun from the south and/or winds from the north, sprawling ranches with hard-to-reach rooms and extended duct runs from centralized heating and cooling sources—all are challenges that no single thermostat can adequately meet.

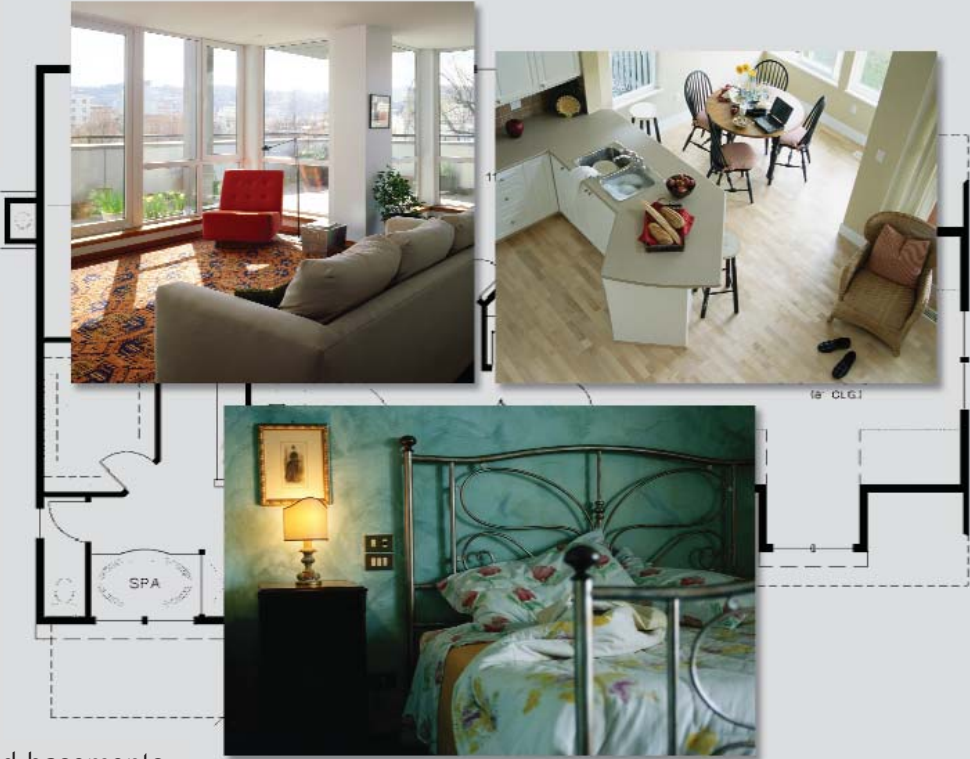
Likewise, as needs change, floor plans are just as likely to be modified. New room additions, atriums, solariums, newly finished basements, attics and rooms over garages, bedrooms converted to studies or rooms for other purposes, the addition of fireplaces, skylights—each can change the dynamics of a home and its heating and cooling requirements.

Meeting these requirements more affordably and effectively is what makes Tappan's Zoning System unique. Unlike conventional zoning systems that utilize integrated sensors, reconfigured ductwork, wiring and motorized mechanical dampers, the simplicity of Tappan's unique air-actuated damper design requires far fewer moving parts for longer, trouble-free service life. And, more importantly, simplicity means ease of installation. Particularly, in existing homes eliminating the need for extensive retrofit modifications.

Up To 30% More Efficient.

Because each zone's dampers are controlled by a dedicated thermostat, the ideal system should employ digital types which are programmable. Settings can then be adjusted to coincide with activity levels at any time of day throughout the house. In fact, significant savings can be realized by only conditioning selected areas according to need. Once occupants retire to bed, when they are away to work or school, or on vacation, requirements for heating or cooling are minimized altogether.

In addition to reducing energy costs by as much as 30 percent, a properly zoned system can also allow the



energy-savvy consumer to use smaller capacity equipment in new installations for even greater savings without compromising comfort.

