

TECHNICAL SPECIFICATIONS

B6BV Series

Air Handler 13/14 SEER Residential System 18,000 - 60,000 Btuh (Heat Pump & Air Conditioner)

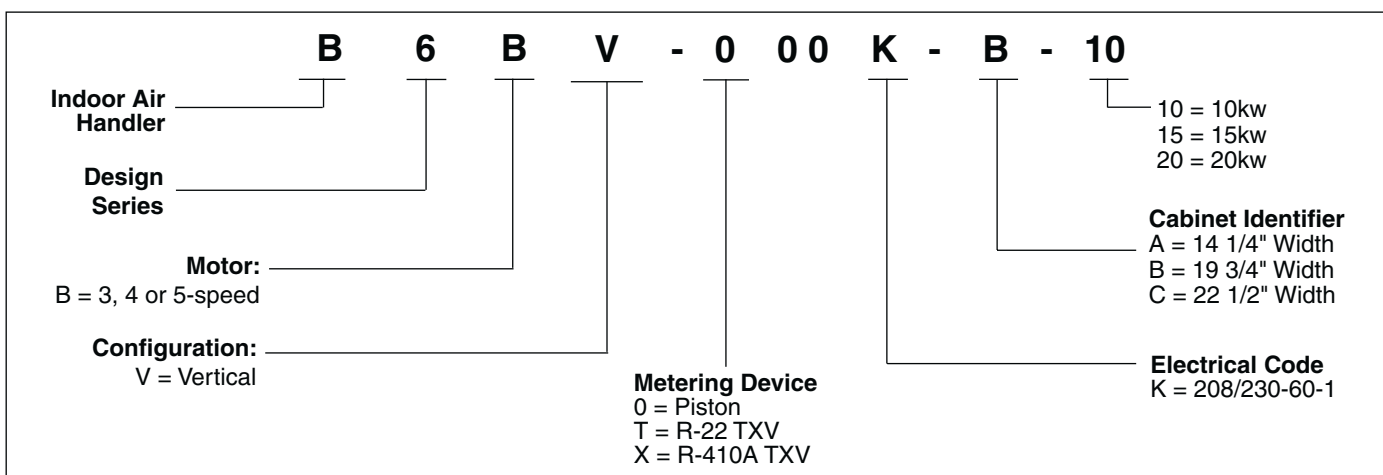
The B6BV series of air handlers, when combined with our heat pump or air conditioner, offer a full line of quality, split system heating and cooling equipment.



FEATURES and BENEFITS

- **Durable, Attractive Cabinet:** Designed using galvanized steel. The door is also galvanized steel, with a polyester urethane finish. The 950 hour salt spray finish resists corrosion 50% better than comparable units. The plastic drain pan is corrosion-resistant.
- **Multi-speed:** Gives flexibility of installation.
- **Ease-of-Service:** Plug-in wire connections and built-in filter rack makes the air handler easy to service.
- **Circuit Board:** Incorporating blower time delay relay, low voltage terminal strip, and heat-strip sequencing.
- **Air Handler Control Board:** Controls time-sequencing of heat stages with field-selectable sequence timing.
- **Breaker Accessibility:** Breaker accessible from front of unit when heater is applied.
- **No Fasteners on Sides or Back:** Smooth surfaces for ease of installation.
- **Cabinet Insulation:** 1" insulation with an R-value of 4.2 contributes to quiet operation and prevents cabinet sweating in difficult applications.
- **Designed to meet the requirements 610.2.A.2:** Meets Florida building code requirements for air leakage.

MODEL IDENTIFICATION CODE



ELECTRICAL DATA

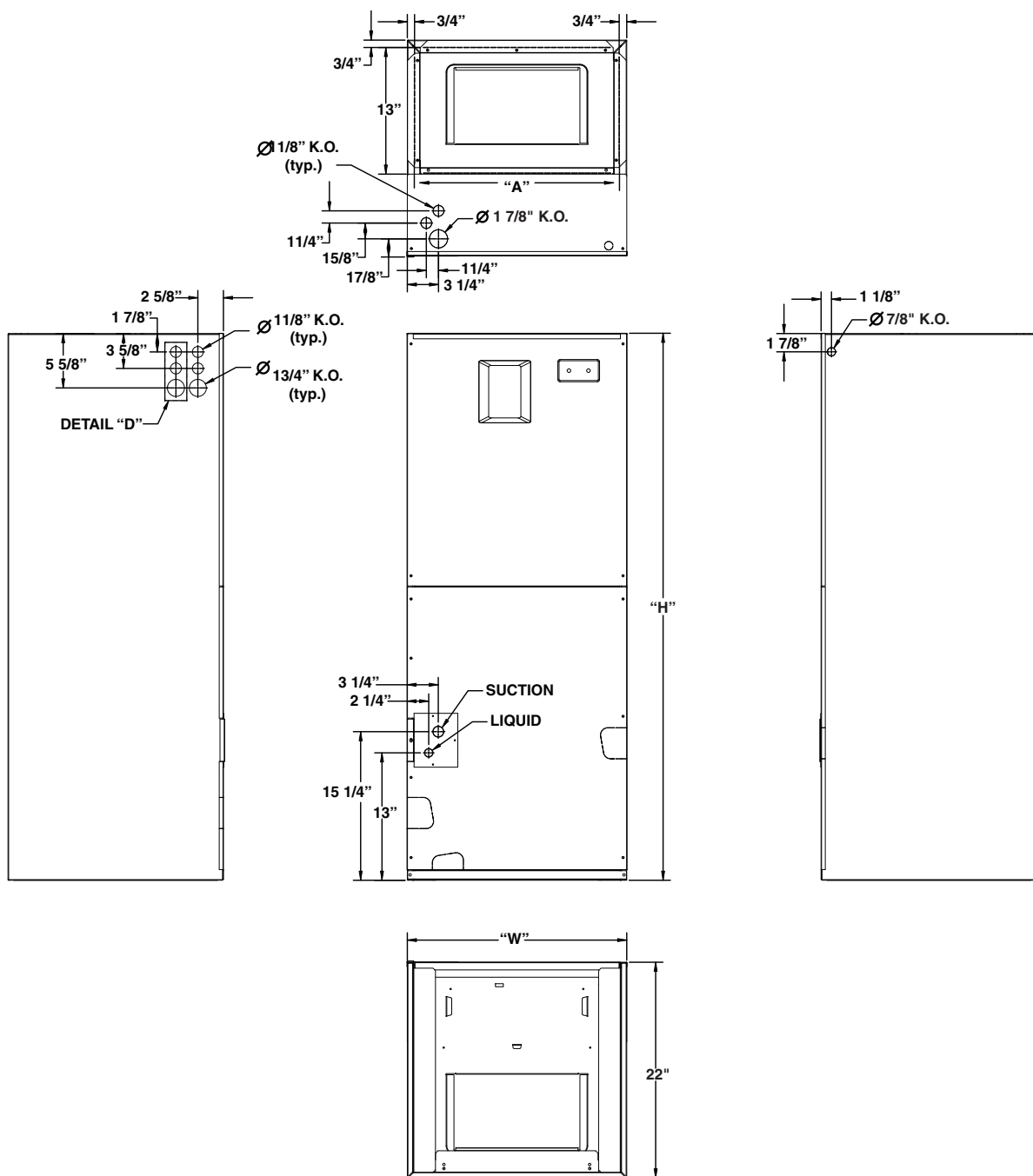
Cabinet	Capacity	Model Number H6HK-	Voltage 240								Voltage 208							
			Min. Circuit Amp.				Maximum Over-current Rating				Min. Circuit Amp.				Maximum Over-current Rating			
			Circuit A	Circuit B	Circuit C	Single Circuit	Circuit A	Circuit B	Circuit C	Single Circuit	Circuit A	Circuit B	Circuit C	Single Circuit	Circuit A	Circuit B	Circuit C	Single Circuit
B	-	10 KW	53.6	-	-	53.6	60.0	-	-	60.0	47.0	-	-	47.0	50.0	-	-	50.0
	-	15 KW	56.6	25.0	-	78.6	60.0	30.0	-	80.0	47.0	21.7	-	68.6	50.0	25.0	-	70.0
C	-	10 KW	56.3	-	-	56.3	60.0	-	-	60.0	50.1	-	-	50.1	60.0	-	-	60.0
	-	20 KW	56.3	50.0	-	106.3	60.0	60.0	-	110.0	50.1	43.3	-	93.4	60.0	45.0	-	100.0

ACCESSORIES

Description	Cabinet Size	
	B	C
Downflow Plenum Connector, 6.25"	913840	914969
Downflow Plenum Connector, 8.25"	913841	914970
Downflow Plenum Connector, 10.25"	913842	914971
Upflow Pedestal Mounting Stand	913872	913873
Downflow Coil Adaptor	919321	919322 *919323

* Use when installing B width coil in C width cabinets

DIMENSIONS



SPECIFICATIONS

Model Number B6BV-	-000K-B-10	-000K-B-15	000K-C-10	000K-C-20
Nominal cooling capacity - BTUh ¹	10 x 8	10 x 8	11 x 10	11 x 10
Motor Hp-speeds-type	1/3-4-PSC	1/3-4-PSC	3/4-16-ECM	3/4-16-ECM
Filter Size (supplied internal filter rack) ²	18x20x1	18x20x1	20x20x1	20x20x1
Approximate Shipping Weight, lbs	90	90	116	116
Height, "H", in.	43-5/16	43-5/16	55-15/16	55-15/16
Width, "W", in.	19-11/16	19-11/16	22-7/16	22-7/16
Supply Air Outlet Dimension, in.	12-7/8 x 18-1/4	12-7/8 x 18-1/4	12-7/8 x 21	12-7/8 x 21

¹ See current AHRI Directory for certified combinations and ratings.

² Filter is not supplied with unit.

BLOWER PERFORMANCE DATA

Minimum Heating Airflow Settings (in CFM)							
Cabinet	Nominal Electric Heat KW						
	5	8	10	15	20	25	30
C	1000	1100	1200	1400	1600	1800	2000

Model	Nominal Blower Size	Nominal Motor Size	Number of Speeds	Ext. Static Pressure (in W.C.)	Low	Medium Low	Medium High	High
B6BV B - Cabinet	10 x 8	1/3 hp	4-sp	0.1	800	1090	1265	1405
				0.2	780	1080	1255	1395
				0.3	760	1060	1240	1375
				0.4	740	1095	1215	1350
				0.5	715	1020	1190	1310

NOTES:

- 1) Airflow is shown in cfm, +/- 5%.
- 2) All airflows are measured without filter and with dry coil. For filter velocity of 300 ft./min. subtract .08" external static pressure. For wet coil, subtract .1" external static pressure.
- 3) See unit nameplate or installation instructions for maximum recommended external static pressure.

	Switch Setting				Cooling or Heating Airflow (CFM)							
					Dry Coil ESP							
	1/5	2/6	3/7	4/8	0.1	0.2	0.3	0.4	0.5	0.6	0.7	0.8
B6BV C - cabinet	0	0	0	0	710	580	395					
	1	0	0	0	830	690	675	530	505			
	0	1	0	0	930	875	710	665	560	530		
	1	1	0	0	1065	1015	900	840	800	705	665	635
	0	0	1	0	1185	1115	1010	960	925	875	830	745
	1	0	1	0	1275	1220	1175	1120	1060	970	930	890
	0	1	1	0	1365	1350	1255	1200	1150	1105	1060	1025
	1	1	1	0	1480	1430	1370	1325	1265	1225	1185	1140
	0	0	0	1	1560	1535	1485	1430	1375	1335	1285	1240
	1	0	0	1	1650	1600	1545	1500	1450	1405	1360	1305
	0	1	0	1	1730	1685	1660	1610	1570	1520	1470	1420
	1	1	0	1	1785	1740	1695	1645	1615	1545	1510	1470
	0	0	1	1	1865	1820	1785	1750	1695	1655	1605	1560
	1	0	1	1	1920	1890	1850	1805	1765	1715	1675	1640
	0	1	1	1	2010	1965	1960	1900	1850	1810	1775	1730
	1	1	1	1	2065	2020	1985	1955	1915	1880	1840	1810

NOTE: 0 = OFF, 1 = ON



GENERAL TERMS OF LIMITED WARRANTY

Nortek Global HVAC, LLC will furnish a replacement for any part of this product which fails in normal use and service within the terms and conditions of the warranty.

For complete details of the Limited Warranty, including applicable terms and conditions, see your local installer or contact the Nortek Global HVAC, LLC warranty department for a copy.

Before purchasing this appliance, read important energy cost and efficiency information available from your retailer. Specifications and illustrations subject to change without notice and without incurring obligations. Printed in U.S.A (1E/2015)