



TECHNICAL SPECIFICATIONS

Model POF Series



M1200 Product Line

**High Boy /Horizontal Oil Furnace
with Variable Speed Blower**

- **M1200 - 12 YEAR ALL PARTS LIMITED WARRANTY**
- **M1200 WITH UPGRADED WARRANTY PACKAGE - 12 YEAR ALL PARTS & LABOR LIMITED WARRANTY**
- Both the standard and upgraded limited warranty packages offer a 12 Year Dependability Promise to replace the entire unit, if the unit's major component (heat exchanger or compressor) fails within the first 12 years of operation, to the original owner.
- Product registration (by consumer or dealer) required for 12-year Warranty and Dependability Promise within a limited period of time after the installation. See current warranty document for details. This can be viewed at www.maytaghvac.com or ask your sales representative.
- Dealer is responsible for registration of labor portion of warranty.
- Also when registered, this furnace upgrades to a limited lifetime heat exchanger warranty.



The heart of the POF series furnace with variable speed blower is the ECM motor (electronically commutated motor). The ECM consists of a brushless DC type motor with a microprocessor based variable speed drive. The drive continuously monitors RPM and torque output of the motor. This information is fed into pre-programmed algorithms in the microprocessor for correct motor output to maintain constant airflow regardless of external static pressure. The microprocessor stores delay profiles to optimize the efficiency and performance of the split system. The variable speed blower steps through intermediate airflows during the on and off profiles. This results in smoother, more efficient operation with quiet, gradual starts and stops.

Features and Benefits

- **Cabinet Construction** – 22 gauge steel cabinet ensures strength and quiet operation.
- **Cabinet Finish** – Thermoset powder paint for greater durability.
- **Firing Rates** – Multi-firing rates for a wide range of applications.
- **Stainless Steel Doors** – The unit features attractive brushed stainless steel doors that you expect on distinctive appliances.
- **Burner** – Equipped with industry leading Beckett burner which includes cleancut pump, PSC motor, and solid state controls. Factory pre-wired, pre-assembled and tested. Ready to connect to fuel supply line.
- **Barometric Draft Control** – Included with all models.
- **Heat Exchanger** – Proven heat exchanger design featuring 100% welded construction for maximum performance. Large, accessible heat exchanger clean-out ports.
- **Radiator** – “Wrap-around” type for maximum heat transfer.
- **Variable Speed Blower** – Maximizes air conditioner and heat pump efficiencies. On selected units, SEER ratings up to 16 and HSPF ratings up to 8.5 are ARI listed.
- **Blower Assembly** – Entire unit with motor can be easily removed for servicing.
- **Filters Included in all Models** – Filter and rack packaged with POF models.
- **Insulation** – Spun glass and aluminum foil for “hand cool” cabinet.
- **Access Door** – Easily removed for access to burner and controls. Completely enclosed controls and burner in most units.
- **A.F.U.E.** Ratings up to 84%.
- **Coil Transitions** – Adapts Furnace outlet to accept C6 cased coils.
B Cabinet: sku 559528
C Cabinet: sku 559529
D Cabinet: sku 559530

SPECIFICATIONS

High Boy POF1HD Series

Model Number	BTU Input	Heating Capacity BTU/HR	AFUE	Blower Performance CFM Range	Nozzle G.P.H.	Angle of Spray	Filter Size	Ship Wt.
POF1HD091AVFA	70,000	58,800	84.0	0-1227	0.50	80° A	16 x 25	240
	91,000	75,530	83.0		0.65	80° A	16 x 25	240
	105,000	86,100	82.0		0.75	80° A	16 x 25	240
POF1HD140AVFA	105,000	88,200	84.0	0-1527	0.75	60° W	16 x 25	280
	119,000	99,365	83.5		0.85	60° W	16 x 25	280
	140,000	116,200	83.0		1.00	60° W	16 x 25	280

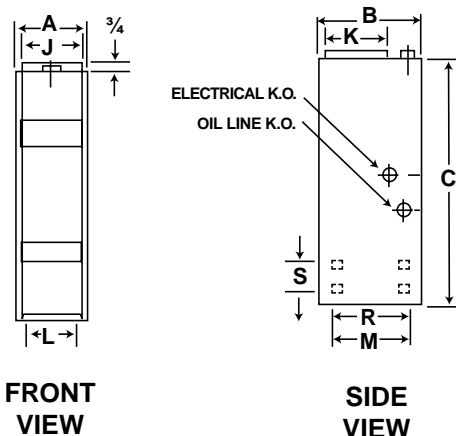
Bold represents factory setting

	POF1HD091AVFA	POF1HD140AVFA
Nominal Blower Size	10 x 10T	10 x 10
Motor HP	1/2	1/2
Motor Type	Programmable Variable Speed	Programmable Variable Speed
RPM Range	0-1200	0-1200
Cooling CFM Range	600-1200	600-1527
Heating Airflow Range	600-1200	600-1527

* Airflow is held constant regardless of external static pressure within the HP and RPM limits of the motor

DIMENSIONS

Model Number	Cabinet Size			Supply Plenum		Bottom Return		Side Return Air K.O.		Diameter of Flue Pipe
	Width A	Depth B	Height C	Width J	Depth K	Width L	Depth M	Width R	Depth S	
POF1HD091AVFA	22	31	49 1/2	20 1/2	20	14	22	22	14	5
POF1HD140AVFA	22	31	58 1/8	20 1/2	20	14	22	22	14	6



FRONT
VIEW

SIDE
VIEW



MAYTAG

Before purchasing this appliance, read important energy cost and efficiency information available from your retailer. Specifications and illustrations subject to change without notice and without incurring obligations.

Manufactured under license by NORDYNE, O'Fallon, MO. ©Registered Trademark/™ Trademark of Maytag Corporation or its related companies. ©2008. All rights reserved.
846B-0409 (Replaces 846B-0808)

Printed in U.S.A. (04/09)