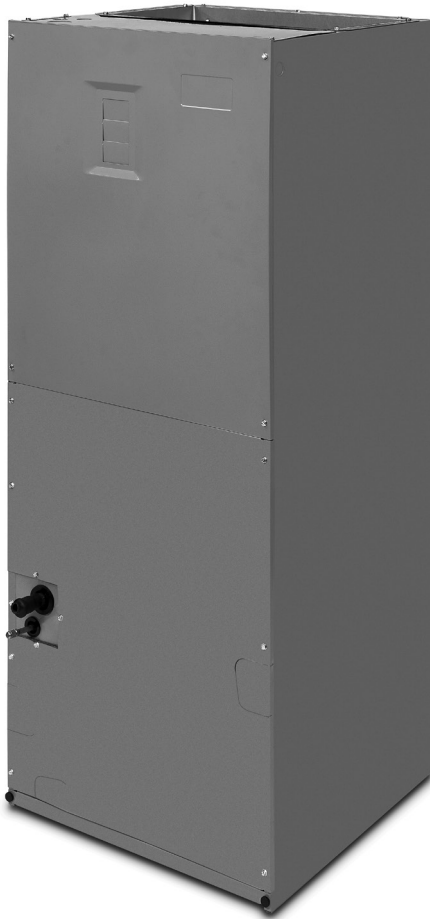


## TECHNICAL SPECIFICATIONS

# B64VMMX Series

### Air Handlers with TXV and ECM blowers for SEER2 Residential System 1.5 - 5 tons (Heat Pump & Air Conditioner)

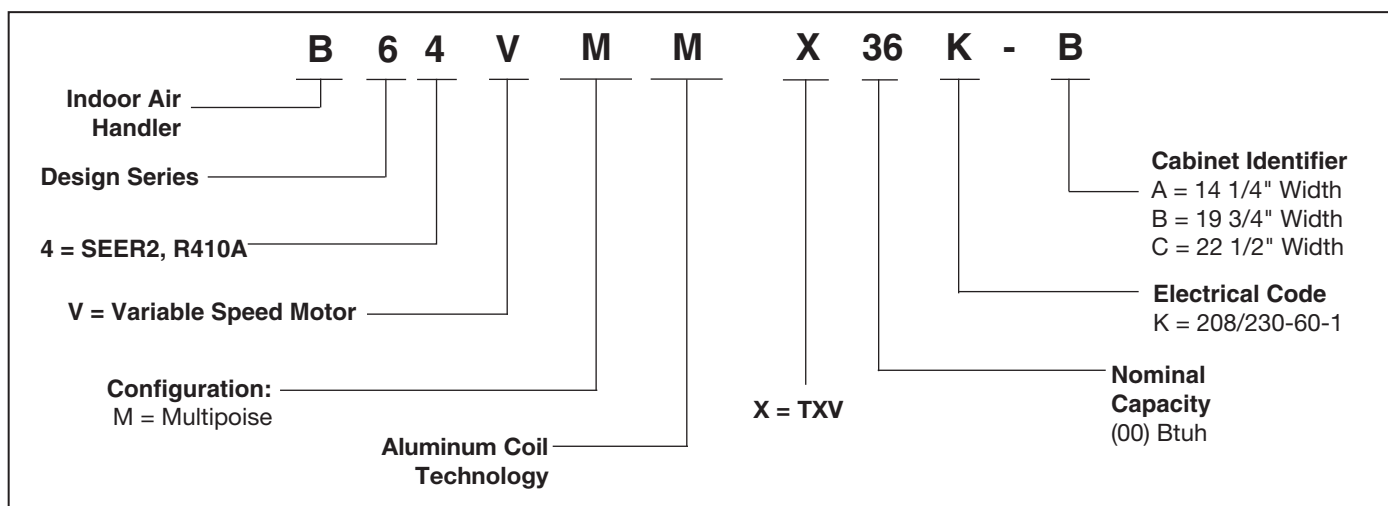
The B64VMMX Series of air handlers, when combined with our heat pump or air conditioner, offers a full line of quality, split system heating and cooling equipment.



## FEATURES and BENEFITS

- **Energy Efficient Variable Speed ECM Motor:** Advanced technology provides 16 field-selectable cooling airflows and automatically sets heating airflows based on the amount of installed heat.
- **Quiet Blower Operation:** Extra quiet and smooth blower on and off cycles.
- **Constant airflow:** Motor automatically adjusts to different static loads.
- **Reduced air stratification:** This results in improved air quality by optimizing humidity removal and filtration capabilities.
- **Multi-poised:** Can be used in horizontal, upflow, downflow and vertical applications.
- **Built in Filter Rack:** makes the air handler easy to service.
- **Plug-in Heater Kit:** Available in 5 kw through 24 kw.
- **Circuit Board:** Incorporating blower time delay relay, low voltage terminal strip, and heat-strip sequencing.
- **Breaker Accessibility:** Breaker accessible from the front of the unit when heater is applied.
- **Plastic Drain Pan:** Provides corrosion resistance.
- **Durable Cabinet:** Galvanized steel with a polyurethane finish. The finish will endure 950 hours of salt spray and resist corrosion 50% better than comparable units.
- **Designed to meet the requirements 610.2.A.2:** Meets Florida building code requirements for air leakage.
- **Thermal Expansion Valve:** Factory installed externally equalized thermal expansion valve provides precise refrigerant control under varying load conditions.
- **Cabinet Insulation:** 1" insulation with an R-value of 4.2 contributes to quiet operation and prevents cabinet sweating in difficult applications.
- **Aluminum Coil Technology:** All aluminum coil provides high corrosion resistance.

## MODEL IDENTIFICATION CODE



## SPECIFICATIONS

Model B64VMMX	24K-A	24K-B	36K-B	48K-C	60K-C
Refrigerant Flow Control	TXV	TXV	TXV	TXV	TXV
Maximum Available Nominal Auxiliary Heat (kw)	10 <sup>1</sup>	15	15	25	25
Motor HP	1/2	1/2	1/2	3/4	1
Approximate Shipping Weight (lbs.)	99.5	112	122	145	147

### NOTES:

1. 10kW horizontal requires limit change

Alternate limits included with heater kit

See current AHRI Directory for certified combinations and ratings. [www.ahridirectory.org](http://www.ahridirectory.org)

## MINIMUM HEATING AIRFLOW SETTINGS (in CFM)

Cabinet	Nominal Electric Heat KW					
	5	8	10	15	20	25
A	800	900	1000	1300	N/A	N/A
B	900	1000	1100	1300	1500	N/A
C	1000	1100	1200	1400	1600	1800

## ACCESSORIES

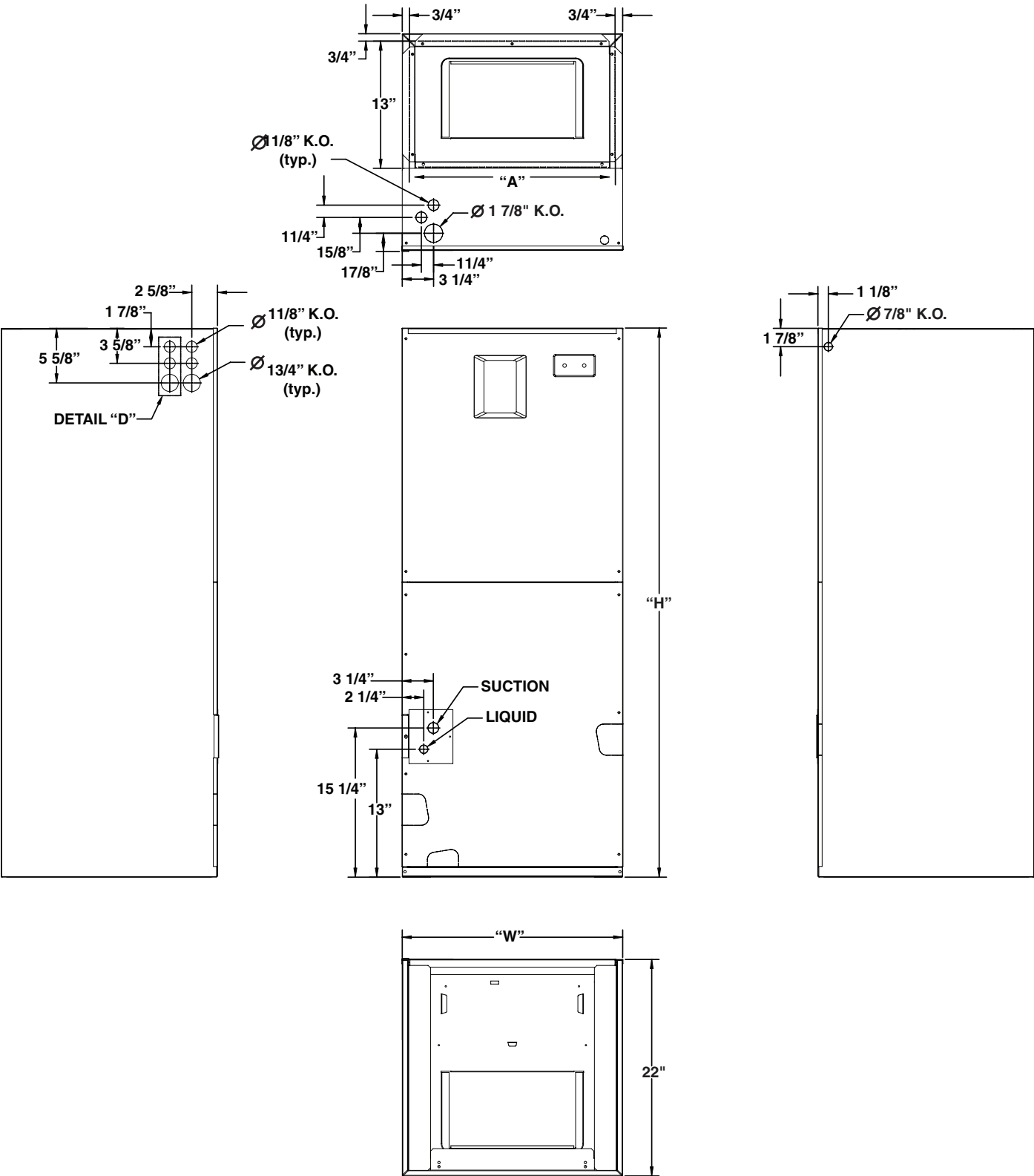
Accessory Kit Description	Cabinet Size			Order Number
	A	B	C	
Down-flow adaptor kit	X			917342
		X		919321
			X	919322
Single circuit adaptor for 2 circuit breakers	X	X	X	913874
Baffle Drip Guard 3"		X		922125
Baffle Drip Guard 4"			X	922126

## 240V Single-Phase Heater Kit Application

Nominal KW	Matched Units					Order Number	
	*24K-A	*24K-B	*36K-B	*48K-C	*60K-C	With Circuit Breakers	Without Circuit Breakers
5	X	X	X	X	X	922521A	922520
8	X	X	X	X	X	922523A	922522
10	X	X	X	X	X	922526A	922525
15	n/a	X	X	X	X	922527A	n/a
20	n/a	n/a	n/a	X	X	922529A	n/a
25	n/a	n/a	n/a	X	n/a	922530A	n/a

DIMENSIONS

Models B64VMMX	Height	Width	Refrigerant Connections		Filter Size	Supply Air Duct Dimensions
			Suction Dia.	Liquid Dia.		
24K-A	43 1/2	14 1/4	3/4	3/8	12 x 20 x 1	12 7/8 x 12 3/4
24K-B	43 1/2	19 3/4	3/4	3/8	18 x 20 x 1	12 7/8 x 18 1/4
36K-B	49 1/2	19 3/4	7/8	3/8	18 x 20 x 1	12 7/8 x 18 1/4
48K-C	56	22 1/2	7/8	3/8	20 x 20 x 1	12 7/8 x 21
60K-C	56	22 1/2	7/8	3/8	20 x 20 x 1	12 7/8 x 21



# ELECTRICAL DATA

Cabinet	Tons	Model Number H8HK-	Voltage 240								Voltage 208							
			Minimum Circuit Ampacity				Maximum Over-current Rating				Minimum Circuit Ampacity				Maximum Over-current Rating			
			Circuit A	Circuit B	Circuit C	Single Circuit	Circuit A	Circuit B	Circuit C	Single Circuit	Circuit A	Circuit B	Circuit C	Single Circuit	Circuit A	Circuit B	Circuit C	Single Circuit
A	24	None	4.8	-	-	4.8	15	-	-	15	4.8	-	-	4.8	15	-	-	15
		005H-XX	29.8	-	-	29.8	30	-	-	30	26.4	-	-	26.4	30	-	-	30
		008H-XX	44.3	-	-	44.3	45	-	-	45	39.0	-	-	39.0	40	-	-	40
		010H-XX	54.8	-	-	54.8	60	-	-	60	48.0	-	-	48.0	50	-	-	50
B	24	None	4.8	-	-	4.8	15	-	-	15	4.8	-	-	4.8	15	-	-	15
		005H-XX	29.8	-	-	29.8	30	-	-	30	26.4	-	-	26.4	30	-	-	30
		008H-XX	44.3	-	-	44.3	45	-	-	45	39.0	-	-	39.0	40	-	-	40
		010H-XX	54.8	-	-	54.8	60	-	-	60	48.0	-	-	48.0	50	-	-	50
		015H-XX	50.0	29.8	-	79.8	50	30	-	80	43.3	26.4	-	69.7	45	30	-	70
B	36	None	4.8	-	-	4.8	15	-	-	15	4.8	-	-	4.8	15	-	-	15
		005H-XX	29.8	-	-	29.8	30	-	-	30	26.4	-	-	26.4	30	-	-	30
		008H-XX	44.3	-	-	44.3	45	-	-	45	39.0	-	-	39.0	40	-	-	40
		010H-XX	54.8	-	-	54.8	60	-	-	60	48.0	-	-	48.0	50	-	-	50
		015H-XX	50.0	29.8	-	79.8	50	30	-	80	43.3	26.4	-	69.7	45	30	-	70
C	48	None	6.8	-	-	6.8	15	-	-	15	6.8	-	-	6.8	15	-	-	15
		005H-XX	31.8	-	-	31.8	35	-	-	35	28.4	-	-	28.4	30	-	-	30
		008H-XX	46.3	-	-	46.3	50	-	-	50	41.0	-	-	41.0	45	-	-	45
		010H-XX	56.8	-	-	56.8	60	-	-	60	50.0	-	-	50.0	60	-	-	60
		015H-XX	50.0	31.8	-	81.8	50	35	-	90	43.3	28.4	-	71.7	45	30	-	80
		020H-XX	50.0	56.8	-	106.8	50	60	-	110	43.3	50.0	-	93.3	45	60	-	100
		025H-XX	50.0	50.0	31.8	131.8	50	50	35	150	43.3	43.3	28.4	114.9	45	45	30	125
C	60	None	8.8	-	-	8.8	15	-	-	15	8.8	-	-	8.8	15	-	-	15
		005H-XX	33.8	-	-	33.8	35	-	-	35	30.4	-	-	30.4	35	-	-	35
		008H-XX	48.3	-	-	48.3	50	-	-	50	43.0	-	-	43.0	45	-	-	45
		010H-XX	58.8	-	-	58.8	60	-	-	60	52.0	-	-	52.0	60	-	-	60
		015H-XX	50.0	33.8	-	83.8	50	35	-	90	43.3	30.4	-	73.7	45	35	-	80
		020H-XX	50.0	58.8	-	108.8	50	60	-	110	43.3	52.0	-	95.3	45	60	-	100

# AIRFLOW DATA

B64VM A-CABINET	COOLING AIRFLOW					
	A/B SWITCH SETTING 0 = OFF, 1 = ON	COOL SWITCH SETTING 0 = OFF, 1 = ON				AIRFLOW (CFM)
		5	6	7	8	
	0	0	0	0	0	525
	0	0	0	0	1	560
	0	0	0	1	0	600
	0	0	0	1	1	625
	0	0	1	0	0	700
	0	0	1	0	1	750
	0	0	1	1	0	800
	0	0	1	1	1	850
	0	1	0	0	0	875
	0	1	0	0	1	890
	0	1	0	1	0	930
	0	1	0	1	1	950
	0	1	1	0	0	1000
	0	1	1	0	1	1050
	0	1	1	1	0	1125
	0	1	1	1	1	1200

HEATING AIRFLOW		
A/B SWITCH SETTING 0 = OFF, 1 = ON	HEATER KIT INSTALLED (KW)	AIRFLOW (CFM)
0	0	600
0	5	800
0	8	1000
0	10	1000
0	15	1300
0	20	n/a
0	25	n/a

B64VM B-CABINET	COOLING AIRFLOW					
	A/B SWITCH SETTING 0 = OFF, 1 = ON	COOL SWITCH SETTING 0 = OFF, 1 = ON				AIRFLOW (CFM)
		5	6	7	8	
	1	0	0	0	0	525
	1	0	0	0	1	560
	1	0	0	1	0	600
	1	0	0	1	1	650
	1	0	1	0	0	700
	1	0	1	0	1	750
	1	0	1	1	0	800
	1	0	1	1	1	850
	1	1	0	0	0	875
	1	1	0	0	1	950
	1	1	0	1	0	1050
	1	1	0	1	1	1150
	1	1	1	0	0	1250
	1	1	1	0	1	1350
	1	1	1	1	0	1400
	1	1	1	1	1	1600

HEATING AIRFLOW		
A/B SWITCH SETTING 0 = OFF, 1 = ON	HEATER KIT INSTALLED (KW)	AIRFLOW (CFM)
1	0	700
1	5	900
1	8	1100
1	10	1100
1	15	1300
1	20	1500
1	25	n/a

B64VM C-CABINET	COOLING AIRFLOW					
	A/B SWITCH SETTING (* = EITHER 0 OR 1)	COOL SWITCH SETTING 0 = OFF, 1 = ON				AIRFLOW (CFM)
		5	6	7	8	
	*	0	0	0	0	1100
	*	0	0	0	1	1200
	*	0	0	1	0	1250
	*	0	0	1	1	1300
	*	0	1	0	0	1350
	*	0	1	0	1	1400
	*	0	1	1	0	1450
	*	0	1	1	1	1500
	*	1	0	0	0	1550
	*	1	0	0	1	1600
	*	1	0	1	0	1650
	*	1	0	1	1	1700
	*	1	1	0	0	1750
	*	1	1	0	1	1800
	*	1	1	1	0	1900
	*	1	1	1	1	2000

HEATING AIRFLOW		
A/B SWITCH SETTING (* = EITHER 0 OR 1)	HEATER KIT INSTALLED (KW)	AIRFLOW (CFM)
*	0	800
*	5	1000
*	8	1200
*	10	1200
*	15	1400
*	20	1600
*	25	1800

## NOTES:

- Airflow values listed are for 240V operation. For 208V operation, multiply A & B cabinet values by .95; for C-cabinet values multiply by .90
- When matched with two-stage outdoor units the airflow on low (Y1 or W1) input only will be 70% of the values shown in this table.

NOTE: 0 = OFF, 1 = ON

## AIRFLOW DATA continued

		Limit Switch Opening Temperature(s) Required for Each Heater Kit Combination								
Air Handler Model	Blower Orientation	H8HK005H-01A	H8HK005H-11A	H8HK008H-01A	H8HK008H-11A	H8HK010H-01A	H8HK010H-11A	H8HK015H-21A	H8HK020H-21A	H8HK024H-31A
		4.8 kW	4.8 kW	7.5 kW	7.5 kW	9.6 kW	9.6 kW	14.4 kW	19.2 kW	24.0 kW
B64VMMX 24K-A	Upflow/Downflow	#1: 190F	#1: 190F	#1: 190F	#1: 190F	#1: 190F	#1: 190F	-	-	-
	Horizontal Left/Right	#1: 190F	#1: 190F	#1: 190F	#1: 190F	#1: 205F	#1: 205F	-	-	-
B64VMMX 24K-B	ALL	#1: 190F	#1: 190F	#1: 190F	#1: 190F	#1: 190F	#1: 190F	#1: 190F #2: 190F	-	-
B64VMMX 36K-B	ALL	#1: 190F	#1: 190F	#1: 190F	#1: 190F	#1: 190F	#1: 190F	#1: 190F #2: 190F	-	-
B64VMMX 48K-C	ALL	#1: 190F	#1: 190F	#1: 190F	#1: 190F	#1: 190F	#1: 190F	#1: 190F #2: 190F	#1: 190F #2: 190F	#1: 190F #2: 190F #3: 190F
B64VMMX 60K-C	ALL	#1: 190F	#1: 190F	#1: 190F	#1: 190F	#1: 190F	#1: 190F	#1: 190F #2: 190F	#1: 190F #2: 190F	-

### Notes:

All B64 Air Handlers have 2 blower housing limits installed (130F opening temperature), field wired into the low voltage circuit of the H8HK\*A heater kit.

Dashes denote combinations that are not allowed.

Any limit specified other than 190F requires a limit change.

## Limit Switch Combinations for B64VMMX Air Handlers



### GENERAL TERMS OF LIMITED WARRANTY

Nortek Global HVAC, LLC will furnish a replacement for any part of this product which fails in normal use and service within the terms and conditions of the warranty.

For complete details of the Limited Warranty, including applicable terms and conditions, see your local installer or contact the Nortek Global HVAC, LLC warranty department for a copy.

Before purchasing this appliance, read important energy cost and efficiency information available from your retailer. Specifications and illustrations subject to change without notice and without incurring obligations. Printed in U.S.A. (07/23)