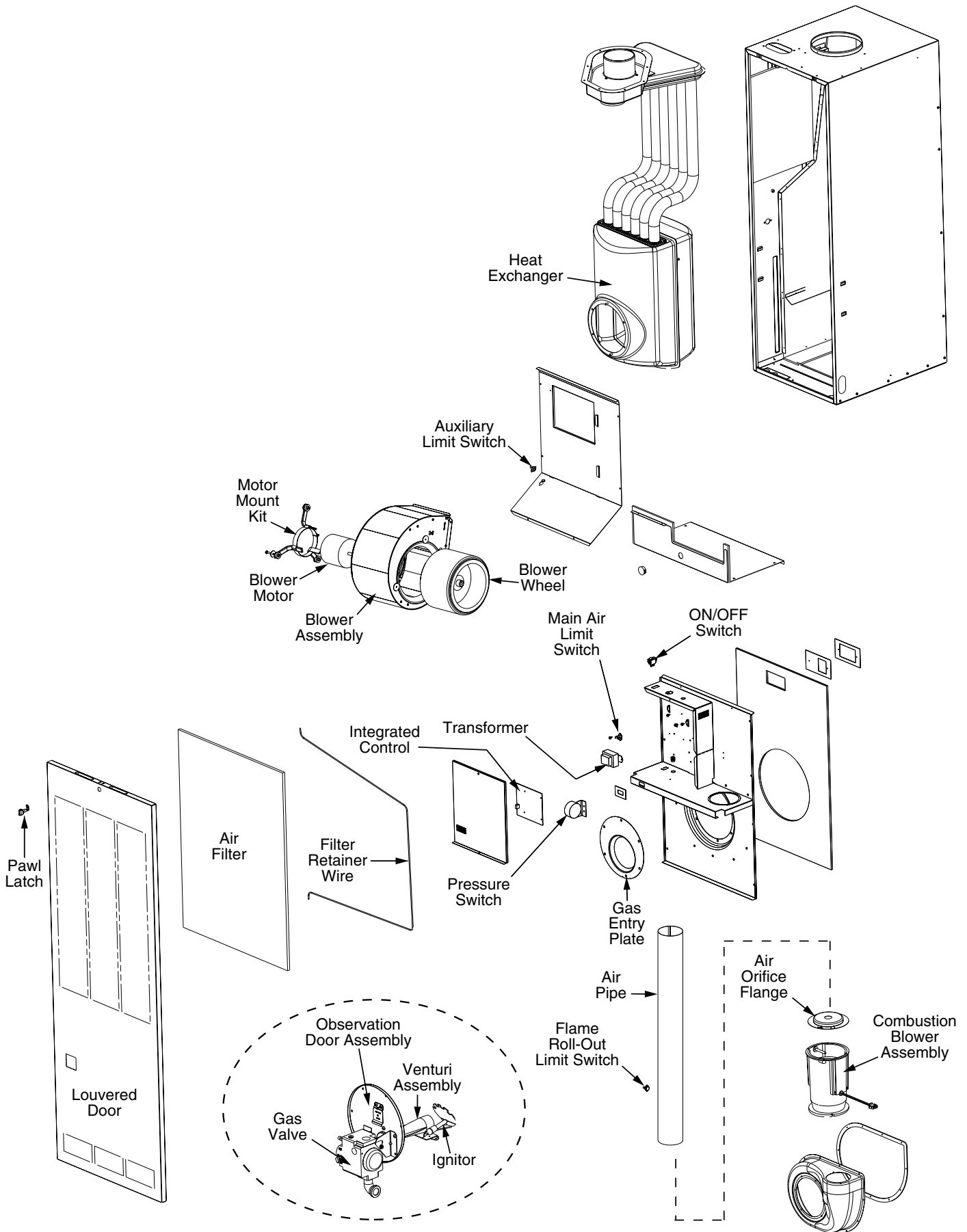


MG1E SERIES

DIRECT VENT, FORCED AIR, GAS FURNACES





MG1E SERIES FURNACES

DESCRIPTION	MG1E			
	056	070	077	090
Air Filter	669064R	669064R	669064R	669064R
Air Orifice Flange	263871R	263872R	263873R	263875R
Air Pipe	387210R	387210R	387210R	387210R
Air Temperature Limit Switch	626470R	626618R	626618R	626618R
Auxiliary Limit Switch	626619R	626619R	626619R	626619R
Blower Housing	297217R	297217R	297217R	297217R
Blower Motor	1027351R	1027352R	1027353R	1027354R
Blower Motor Choke (Not Shown)	622340R	622340R	622340R	622340R
Blower Wheel	667258R	667258R	667258R	667258R
Burner (less Orifice)	903406	903406	903406	903406
Burner Spud (Not Shown)	663699R	663699R	663699R	663699R
Close-Off Plate (Left)	355480R	355480R	355480R	355480R
Close-Off Plate (Right)	355490R	355490R	355490R	355490R
Coil Door (White) *See Note below	903094	903094	903094	903094
Combustion Air Baffle Kit	903722	903722	903722	903722
Combustion Blower Assembly	903404	903404	903404	903404
Door Latch	668420R	668420R	668420R	668420R
Door Strike	1018719	1018719	1018719	1018719
Elbow Assembly (Not Shown)	624612R	624612R	624612R	624612R
Filter Retainer Wire	669065R	669065R	669065R	669065R
Fuse, 3 Amp (Not Shown)	632261R	632261R	632261R	632261R
Gas Entry Plate	383610	383610	383610	383610
Gas Valve (Honeywell)	903596	903596	903596	903596
Gasket Kit	730534R	730534R	730534R	730534R
Heat Exchanger	903418	903419	903419	903420
Ignitor	903110A	903110A	903110A	903110A
Integrated Control	1021575R	1021575R	1021575R	1021575R
Louvered Door (White)	903407	903407	903407	903407
Motor Mount Kit (C unit)	903489	903489	903489	903489
Orifice, LP Gas (Not Shown)	661045R	661042R	661040R	661036R
Orifice, Natural Gas (Not Shown)	661029R	661024R	661021R	661017R
Observation Door Assembly	264080R	264080R	264080R	264080R
On/Off Switch	632337R	632337R	632337R	632337R
Pawl Latch	618107R	618107R	618107R	618107R
Pressure Switch	1010775R	1010775R	1010775R	1010775R
Transformer	621807R	621807R	621807R	621807R

Please specify the correct Model No., Serial No, and part number(s) when ordering parts from the nearest authorized dealer or service center.

* For factory installed 20" coil box

