

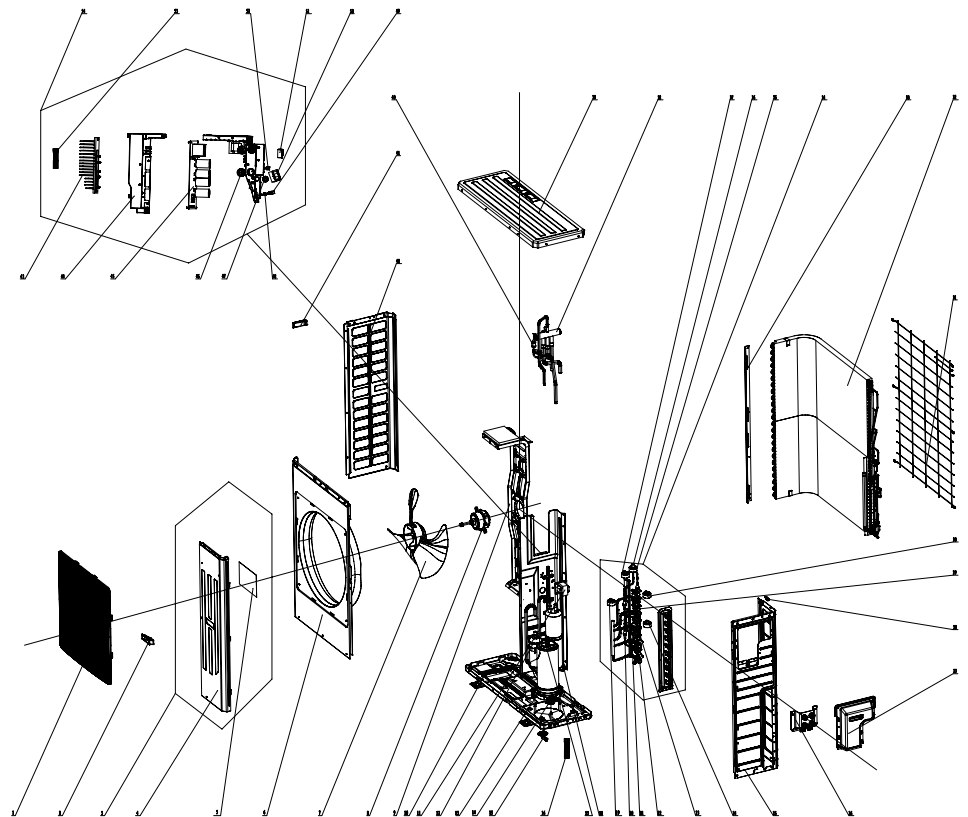
# REPLACEMENT PARTS LIST

FLEX MATCH SYSTEM

OUTDOOR UNIT

GXH42(12.3)FMK4DH

ITEM #	COMPONENT
1	FRONT GRILL
2	HANDLE
3	FRONT SIDE PLATE SUB-ASSY
4	FRONT SIDE PLATE
5	INSULATED BOARD (COVER OF ELECTRIC BOX)
6	CABINET
7	AXIAL FLOW FAN
8	FAN MOTOR
9	MOTOR SUPPORT ASSY
10	ELECTRICAL HEATER
11	REACTOR
12	COMPRESSOR
13	ELECTRICAL HEATER (COMPRESSOR)
14	COMPRESSOR GASKET
15	DRAINAGE JOINT
16	SENSOR SUB-ASSY
17	COMPRESSOR OVERLOAD PROTECTOR (EXTERNAL)
18	BOLT
19	ELECTRIC EXPAND VALVE FITTING
20	STRAINER A
21	BIDIRECTION STRAINER
22	CUT OFF VALVE
23	CUT OFF VALVE
24	ELECTRIC EXPAND VALVE FITTING
25	RIGHT SIDE PLATE
26	WIRING COVER SUB-ASSY
27	HANDLE ASSY
28	WIRING CLAMP
29	CUT OFF VALVE
30	ELECTRIC EXPAND VALVE FITTING
31	REAR GRILL
32	CONDENSER ASSY
33	CONDENSER SUPPORT PLATE
34	VALVE SUPPORT ASSY
35	ELECTRIC EXPAND VALVE FITTING
36	ELECTRONIC EXPANSION VALVE
37	ELECTRIC EXPAND VALVE FITTING
38	4-WAY VALVE ASSY
39	TOP COVER
40	PRESSURE PROTECT SWITCH
41	LEFT HANDLE
42	LEFT SIDE PLATE
43	RADIATOR
44	ELECTRIC BOX
45	MAIN BOARD
46	CABLE CROSS LOOP
47	MAGNETIC RING
48	INSULATION GASKET C
49	WIRE CLAMP
50	TERMINAL BOARD
51	TERMINAL BOARD
52	WIRE CLAMP
53	SENSOR SUB-ASSY
54	ELECTRIC BOX ASSY



## GXH42(12.3)FMK4DH

	PART DESCRIPTION	PART CODE	NORTEK PART NUMBER
1	Front Grill	01574106	1032566
2	Handle	26235253	1032567
3	Front Side Plate Sub-Assy	01305508	1032568
4	Front Side Plate	01305065P	1032569
5	Insulated Board (Cover of Electric Box)	20113003	1032461
6	Cabinet	01435007P	1032570
7	Axial Flow Fan (Fan Blade)	10335010	1032571
8	Fan Motor	1570280201	1008279
9	Motor Support Assy	01805200256	1032572
10	Electrical Heater (Chassis)	765100047	1032542
11	Reactor	43130186	1032552
12	Compressor	00205200003	1014116
13	Electrical Heater (Crankcase Heater)	7651873209	1008026
14	Compressor Gasket (Grommet)	76713066	1008256
15	Drainage Joint	26113009	1032573
16	Temp Sensor Sub-Assy Port A, B, C, D, & E (Liquid and Suction)*	39004100007G	1008290
17	Compressor Overload Protector (External)	00180030	1025119
18	Bolt	70210051	1032574
19	Electric Expand Valve & Fitting (Red) (EEV Coil Port E)	4304413222	1014112
20	Strainer A	07210022	1032546
21	Bidirection Strainer	07220016	1032550
22	Cut Off Valve (3/8-in Gas/Suction Service Valve) (Ports A, B, C, D, & E)	071302391	1025095
24	Electric Expand Valve & Fitting (Green) (EEV Coil Port C)	4304413242	1044972
24	Electric Expand Valve & Fitting (Green) (EEV Coil Port C) <b>NOTE: For Units Manufactured Before 2015</b>	4300876719	1014110
25	Right Side Plate	0131410002701P	1032576
26	Wiring Cover Sub-Assy	01264100034	1032528
27	Handle Assy	02204100008	1032529
28	Wiring Clamp	26115004	1032440
29	Cut off Valve (1/4-in Liquid Line Service Valve) (Ports A, B, C, D, & E)	07130239	1028721
30	Electric Expand Valve & Fitting (Blue) (EEV Coil Port D)	4304413241	1044971
30	Electric Expand Valve & Fitting (Blue) (EEV Coil Port D) <b>NOTE: For Units Manufactured Before 2015</b>	4300876718	1014111
31	Rear Grill	01574100007	1032577
32	Condenser Assy	01124100116	1032466
33	Condenser support plate	01895309	1032578

\*Temperature Sensor contains Port A, B, C, D & E (Liquid & Suction).

## GXH42(12.3)FMK4DH

	PART DESCRIPTION	PART CODE	NORTEK PART NUMBER
34	Valve Support Assy	07133814	1032579
35	Electric Expand Valve & Fitting (White) (EEV Coil Port A)	4304413208	1014117
	Electric Expansion Valve (EEV Assy)	30174000020	1044983
36	Electric Expansion Valve (EEV Assy) <b>NOTE: For Units Manufactured Before 2015</b>	07133813	1044982
37	Electric Expand Valve & Fitting (Black) (EEV Coil Port B)	4304413243	1044973
37	Electric Expand Valve & Fitting (Black) (EEV Coil Port B) <b>NOTE: For Units Manufactured Before 2015</b>	4300876720	1014109
38	4-Way Valve Assy (Reversing Valve Assy)	04045200070	1014119
39	Top Cover	0125500901P	1032581
40	Pressure Protect Switch	4602000902	1008292
41	Left Handle	26235401	1032464
42	Left Side Plate	01305064P	1032582
43	Radiator	49018000077	1032583
44	Electric Box	26904100013	1032565
45	Main Board	30228000025	1008281
46	Cable Cross Loop	76510021	1032564
47	Magnetic Ring	49010109	1032563
48	Insulation Gasket C	70410523	1032584
49	Wire Clamp	71010003	1028737
50	Terminal Block (2 Position)	42018094	1032559
51	Terminal Block (3 Position)	420111041	1032562
52	Wire Clamp	71010003	1028737
53	Temp Sensor Sub-Assy (Discharge, Coil, Ambient)**	39004100006G	1008289
54	Electric Box Assy	01395200377	1032586
	Drain Connector (Not Shown)	06123401	1008701
	Drain Plug (Not Shown)	06813401	1032515
	4-Way Valve Solenoid Coil (Reversing Valve Coil) (Not Shown)	4300040080	1032500
	Adapter Pipes 3/8-in to 5/8-in (Not Shown)	6654100009	1017000
	Adapter Pipes 3/8-in to 1/2-in (Not Shown)	6654100013	1017001
	Adapter Pipes 1/4-in to 3/8-in (Not Shown)	6654104	1017002

\*\*Temperature Sensor contains Discharge, Condenser Coil and Ambient sensors.

