

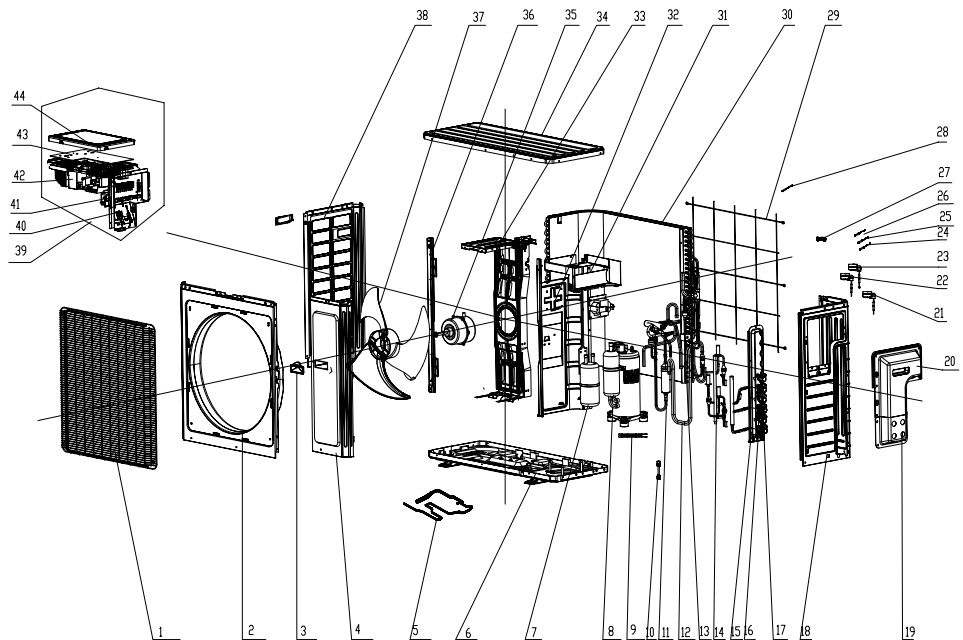
# REPLACEMENT PARTS LIST

FLEX MATCH SYSTEM

OUTDOOR UNIT

GXH24(7.0)FMK4DH

ITEM #	COMPONENT
1	FRONT GRILL
2	CABINET
3	LEFT HANDLE
4	FRONT SIDE PLATE
5	ELECTRICAL HEATER (CHASSIS)
6	CHASSIS SUB-ASSY
7	GAS-LIQUID SEPARATOR
8	COMPRESSOR AND FITTINGS
9	ELECTRIC HEATER (COMPRESSOR)
10	TUBE CONNECTOR SUB-ASSY
11	4-WAY VALVE ASSY
12	CONNECTION PIPE
13	MAGNET COIL
14	ELECTRONIC EXPANSION VALVE ASSY
15	VALVE SUPPORT ASSY
16	CUT OFF VALVE
17	CUT OFF VALVE
18	RIGHT SIDE PLATE
19	WIRING COVER SUB-ASSY
20	HANDLE ASSY
21	ELECTRIC EXPAND VALVE FITTING
22	ELECTRIC EXPAND VALVE FITTING
23	ELECTRIC EXPAND VALVE FITTING
24	TEMPERATURE SENSOR
25	TEMPERATURE SENSOR
26	TEMPERATURE SENSOR
27	WIRING CLAMP
28	TEMPERATURE SENSOR
29	REAR GRILL
30	CONDENSER ASSY
31	ELECTRIC BOX (FIREPROOFING)
32	CLAPBOARD SUB-ASSY
33	MOTOR SUPPORT SUB-ASSY
34	TOP COVER SUB-ASSY
35	FAN MOTOR
36	CONDENSER SUPPORT PLATE
37	AXIAL FLOW FAN
38	LEFT SIDE PLATE
39	ELECTRIC BOX ASSY
40	TERMINAL BOARD
41	CONNECTION SUPPORT
42	ELECTRIC BOX
43	MAIN BOARD
44	ELECTRIC BOX COVER SUB-ASSY



## GXH24(7.0)FMK4DH

	PART DESCRIPTION	PART CODE	NORTEK PART NUMBER
1	Front Grill	01473050	1028856
2	Cabinet	0143500401P	1032520
3	Left Handle	26235401	1032464
4	Front Side Plate	01305086P	1025116
5	Electrical Heater (Chassis)	7651000411	1032521
6	Chassis Sub-Assy	02803280P	1032522
7	Gas-liquid Separator	07223048	1032462
8	Compressor and Fittings	0010524501	1008275
9	Electric Heater (Crankcase Heater)	7651873215	1032523
10	Adapter Pipes 3/8-in to 1/2-in	6654100013	1017001
11	4-Way Valve Assy (Reversing Valve Assy)	03015200001	1014105
12	Connection Pipe	03509700042	1032525
13	Magnet Coil (Reversing Valve Coil)	4300040045	1014099
14	Electronic Expansion Valve Assy (EEV Assy)	0713395301	1025133
15	Valve Support Assy	0713395401	1032526
16	Cut Off Valve (3/8-in Gas/Suction Service Valve) (Port A, B & C)	071302391	1025095
17	Cut Off Valve (1/4-in Liquid Line Service Valve) (Port A, B & C)	07130239	1028721
18	Right Side Plate	0131410000901P	1032527
19	Wiring Cover Sub-Assy	01264100034	1032528
20	Handle Assy	02204100008	1032529
21	Electric Expand Valve Fitting (Red) (EEV Coil) (Port C)	7200206002237	1003151
21	Electric Expand Valve Fitting (Red) (EEV Coil) (Port C) <b>NOTE: For Units Manufactured Before 2015</b>	4300008402	1014107
22	Electric Expand Valve Fitting (Black) (EEV Coil) (Port B)	7200206002236	1003149
22	Electric Expand Valve Fitting (Black) (EEV Coil) (Port B) <b>NOTE: For Units Manufactured Before 2015</b>	4300008401	1014103
23	Electric Expand Valve Fitting (White) (EEV Coil) (Port A)	7200206002235	1003150
23	Electric Expand Valve Fitting (White) (EEV Coil) (Port A) <b>NOTE: For Units Manufactured Before 2015</b>	43000084	1014104
24	Temperature Sensor (Discharge, Coil, Ambient)**	3900030901	1008287
25	Temperature Sensor (Liquid & Suction) (Port C)*	3900007306	1008286
26	Temperature Sensor (Liquid & Suction) (Port B)*	3900007305	1008285

\*Temperature Sensor contains Port A, B, & C (Liquid & Suction).

\*\*Temperature Sensor contains Discharge, Condenser Coil and Ambient sensors.

## GXH24(7.0)FMK4DH

	PART DESCRIPTION	PART CODE	NORTEK PART NUMBER
27	Wiring Clamp	26115004	1032440
28	Temperature Sensor (Liquid & Suction) (Port A)*	39000073	1008284
29	Rear Grille	01574100003	1032521
30	Condenser Coil Assy	0116398001	1032532
31	Electric Box (Fireproofing)	01413426	1028821
32	Clapboard Sub-Assy	01233190	1032534
33	Motor Support Sub-Assy	01705025	1032364
34	Top Cover Sub-Assy	01255007	1032383
35	Fan Motor	1501403402	1008277
36	Condenser Support Plate	01175092	1028784
37	Axial Flow Fan (Fan Blade)	10335014	1028749
38	Left Side Plate	01305043P	1032363
39	Electric Box Assy (All Boards, Heat Sink, Paste)	10000100020	1032537
40	Terminal Block (3 Position)	42010178	1032503
41	Connection Support	01703211	1032538
42	Electric Box (Only)	20113015	1032539
43	Main Control Board	30138000311	1008280
44	Electric Box Cover Sub-Assy	02603217	1032540
	Drain Connector (Not Shown)	06123401	1008701
	Drain Plug (Not Shown)	06813401	1032515
	Compressor Overload (Not Shown)	00180030	1025119
	High Pressure Protect Switch (Not Shown)	460200061	1032747
	4-Way Valve (Valve Only) (Not Shown)	430004032	1028740
	EEV (Ports A, B & C) (Not Shown)	07130369	1014118
	PFC Reactor (Not Shown)	43120129	1044902
	Noise Filter Board (Not Shown)	30033074	1017085

\*Temperature Sensor contains Port A, B, & C (Liquid & Suction).

